

WEATHER			
	Min.	Max.	Precip.
July 31	58	81	0.32
Aug. 1	59	76	0.00
Aug. 2	59	74	0.00
Aug. 3	59	81	0.00
Aug. 4	58	88	0.00
Aug. 5	58	80	0.00
Aug. 6	74	87	Trace

# The Chelsea Standard

## QUOTE

"Laws and appropriations alone are not the answer to urban unrest."  
—Mike Mansfield,  
Senate Democratic Leader

SEVENTY-NINTH YEAR—No. 7

12 Pages This Week

CHELSEA, MICHIGAN, THURSDAY, AUGUST 8, 1968

SUBSCRIPTION \$3.00 PER YEAR

## Plans Nearing Completion for Chelsea Fair

### Exhibitors Entry Cards Available Now at Several Downtown Stores

Chelsea isn't exactly a replica of London at the turn of the century, but it will be trying awfully hard to make its fair as fun and as long-remembered as the year's fair dates are Aug. 16 and 17. Although a complete schedule of events is not ready yet, the fair board has outlined the plan for the first day of the fair.

Wednesday, Aug. 28, is scheduled to be, primarily, a kid's day. From 10 a.m. to 6 p.m., the fair will be held between the hours of 10 a.m. and 6 p.m.

At 5 p.m., one girls bicycle and boys bicycle, purchased from Pendley of Western Auto, will be given away by the fair and carnival. The drawing day and is changed over last year, the bicycles were given away the last day of the fair.

Tickets for rides and the draw may only be purchased at the grounds, and the winner of the draw must be present at 5 p.m. to claim his prize.

Street parade, part of Kiwanis Day, will form at the municipal parking lot between the Methodist and Congregational churches at 10 a.m. All children entering the fair must present an entry card, listing, among other things, the costume the child is wearing.

Destination of the parade is the fairgrounds, and parents of small children are reminded by the fair board to be on hand to meet their children.

Entertainment will continue at the fair arena at 7:30 p.m. with a half-hour concert by the high school band—its first performance following its return from Camp Maplehurst in northern Michigan. This is followed by the presentation of the Fair Queen of 1967.

Games and prizes for "kids of all ages" are also scheduled after the concert. And rumor has it that disguised senior citizens plan to infiltrate the ranks. Also, all prizes to winners of the parade will be presented at this time.

The fair's home economics department co-chairmen, Betty Eder and Wanda Heydlauff, urge all residents of Chelsea and the surrounding area to bring their home-made wares to the fair. Clothing, baked goods, bread, cookies, needle work, knitting, crocheting, quilts, rugs, donuts, pretzels and any other such items will all be needed to make this year's fair a delight for everyone.

### Physical Exam Required By Law Before Band Camp

Students who plan to attend Camp Maplehurst, or "band camp," must have physical examinations by Aug. 16, reports Keith Lawson, high school band director.

Formerly, he explained, doctors came to the high school for the physicals, but this year students must seek out their doctors.

"It is a state law that campers must receive physicals," Lawson said. "We must say—no physical, no camp," he added.

Blankets for doctors to fill out may be picked up at the high school.

## Sidewalk Days Sale Scheduled Next Week-End

It's mad money time again. Resurrect your sun visors, arm garters, suspenders, gaiters and walking sticks to attend the time-honored tradition of outdoor summer sales Aug. 16 and 17 in downtown Chelsea.

Friday, Aug. 16, and Saturday, Aug. 17, are the dates of the 12th annual Sidewalk Days sale, sponsored by the Chelsea Chamber of Commerce. Downtown merchants will "take to the streets" with seasonal and, perhaps, not-so-seasonal merchandise for two days of bargains.

Just as fashions seem to be harkening back to the days of the '30's, recent years have seen the revival of the custom of summer sales all across the land. Merchants who find themselves in the position of having to offer fall and winter clothing at earlier and earlier dates also find summer sidewalk sales a good opportunity to effect a change-over.

But Chelsea's Sidewalk Days are not only confined to clothing. So be on the look-out from 8 a.m. to 9 p.m. on Friday and 8 a.m. into the afternoon on Saturday.

## Two Killed By Careening Car on M-52

A Howell man, who lost control of his car on M-52 at Green Lake Aug. 3, has been charged with manslaughter in the deaths of an Ypsilanti couple who were walking by the side of M-52. He was to appear in Ann Arbor Municipal Court Aug. 7, after posting a \$1,000 bond.

Frank M. Bignell, 53, general manager of WHMI radio station in Howell, stood mute at his arraignment Saturday night.

Dead are Ellis Kincer, 55, and Alice Kincer, 55, of 21 Center St., Ypsilanti. Their son, Jimmy Wayne Kincer, 15, who had been with them at the time, jumped clear of the oncoming car and escaped injury.

The accident occurred at 7 p.m. Saturday about one mile south of North Territorial Rd. on M-52. The Kincers were returning to their car after a day of fishing on Green Lake and were walking south along the shoulder of M-52. Bignell was headed north on M-52 at what Washtenaw county (Continued on page three)



HEIDI SPRAGUE is all set for Christmas with her pinata and striking stick purchased in Mexico on her recent tour with Musical Youth International. The Donald Duck pinata accompanied Heidi through four weeks of bus rides, losing arms and legs in the process. He was recently restored to good working condition.

## Heidi Sprague Disheartened After Mexican Musical Tour

After a month of jogging on a bus from Merida, Mexico, in the Yucatan Peninsula, to Delta College near Saginaw and playing numerous concerts as a member of Musical Youth International, Heidi Sprague returned to her Clear Lake home Aug. 4 burdened with gifts, memories and, undoubtedly, two tired feet.

Last fall, Heidi auditioned for the Musical Youth International group, based in Saline and directed by Lester McCoy of the University of Michigan and Saline. She won her bid for a chair in the group's band and was off to Mexico June 29 after months of rigorous practice.

Heidi will be a junior at Chelsea High school in the fall and last year occupied first chair for flute in the high school band. She has studied the flute for six years and has participated in music programs at Michigan State University, Interlochen and numerous state and ensemble festivals.

The troupe visited 10 Mexican cities and 10 cities in the United States on its return trip. Heidi explains that the group spent three days in most Mexican cities and played "one-night stands" in the U. S. cities as the musicians wound their way back home.

## Damage Found At 4 Schools in Past 10 Days

Every school building in Chelsea except one was entered and damaged in some way between July 26 and Aug. 1.

Between the dates of July 26-28, Chelsea High school was entered by an unknown person or persons who took \$82.25 in cash from two desks, an unknown amount of cash from a glass bottle and \$6 worth of postage stamps from another desk. No sign of how the entry was made could be found, according to police.

The old junior high school was the target of vandalism July 29 when the walls of the gymnasium and several classrooms were written on with crayon pencils. No other damage could be found. On Aug. 1, a 19-year-old girl told police she and two other girls had entered the school through a window and had written on the walls. The two other girls admitted to the vandalism, police reported.

Some time between July 29 and Aug. 1 South school was entered through a window and walls and blackboards were marked with chalk. Several teachers' desks were ransacked and papers thrown on the floor.

Police are investigating the similarity between the old junior high school and the South school incidents, although all three young women were still only one for each party.

Mostly they have just about everything we have up here," she said.

At Merida, the first stop on the tour, the musicians were greeted by the Mexican equivalent of Boy Scouts who formed an honor guard for them. Then it was on to the buses, which the students occupied for 12 to 14 hours a day with half hour breaks for lunch and supper.

Although there was not much time for sightseeing, the troupe visited Chichen Itza at Merida, site of Mayan ruins.

## Township Vote Nominates Local Officers

Sylvan, Lyndon, Lima, Sharon and Freedom voters nominated candidates for township trustees and convention delegates in the Aug. 6 primary.

Lyndon township also listed a nominee for township clerk to fill a vacancy in that position. Contests for these offices were not spirited. Only one candidate for trustee was listed in each township, and no party contest existed in four of the townships. Sylvan township was the only one to list both a Republican and Democratic candidate, but there was still only one for each party.

And they left the driving to the bus company.

The only real difficulty Heidi can recall happened in the Sierra Madre mountains on the way to Durango. It seems the accelerator of the bus would stick to the floor, and one driver would pull it back, when the other driver removed his foot.

"The scariest part of all, however, was that nobody knew about it until later," Heidi said.

Although Heidi feels that the trip was worthwhile from a musical and social standpoint, she seemed a little disheartened with Mexico itself. "It wasn't a place I'd want to visit twice," she stated.

## Jaycees Host State, National Officers

The annual August Steak Fry was the agenda Tuesday evening, Aug. 6, for the Chelsea Jaycees, who met at the American Legion Home on Cavanaugh Lake.

Guest speakers for the evening were Don Blanchi of Mills City, Mont., United States Jaycee vice-president; Bob Padgett of Westland, state president; Don DeMoss of Swartz Creek, state external vice-president; and George Potter, national director from Region 1.

## Primary Vote 'Very Light' In All Areas

### Incumbent Harvey Wins Nomination To Oppose Former Sheriff Petersen

Voting turn-out was reported light in Tuesday's primary election and that fact was born out in the Chelsea area. Less than one-third of the registered voters in Sylvan, Lyndon, Lima, Sharon and Freedom townships made it to the polls to choose candidates for the Nov. 5 national election.

In actual numbers, the turn-out looks like this: Out of approximately 2,000 registered voters in Sylvan township, only 450 came to the polls; Lyndon records 375 registered voters, but 94 voted and one ballot was spoiled; Lima has 661 registered voters of which 202 voted; out of 310 registered voters in Sharon, 74 voted; Freedom township polls took ballots from 180 voters out of a possible 485.

The race for nomination for Washtenaw county sheriff, the one that drew the most candidates, nine in all, saw incumbent sheriff Douglas J. Harvey capture the Democratic nomination with 5,355 votes. Losing to Harvey were Democrats David M. Copi with 4,450 votes and Lawrence P. Oltersdorf with 1,373 votes.

George A. Pegerson brought home the Republican nomination with 2,975. He edged Stanley J. Dulgeroff, 2,738 votes; George Stauch, 1,589 votes; Clare M. LaFolier, 1,108 votes; Clark R. Shelton, 361 votes; and Earl Willis, Jr., 323 votes.

The sole candidate for county supervisor in District 1 (Lyndon, Sylvan, Lima, Sharon, Freedom, Manchester and Bridgewater townships) was Republican Jay L. Bradbury. He was nominated with 701 votes.

County totals show that the contest for U. S. Congressman from the 2nd District brought 7,974 votes for Republican Marvin L. Esch. Democratic candidate Weston Vivian received the highest total in his party—7,520 votes in Washtenaw county. John H. McDermott, Sr., totaled 3,197 votes and A. Jerome Dupont received 679 votes in the Democratic race.

In the 51st state legislative district contest for representative, Republican incumbent Thomas G. Sharpe received 1,466 votes in the county against his opponent, Mary Lou McConaughy, who took 617 votes. Democrat Joseph W. Kolbe received 734 votes for the same contest.

Democrat John M. Toomey received his party's nomination for prosecuting attorney with 5,453 votes. He defeated Elmer E. White who polled 2,880 votes. Republican William F. Delhey came away with 7,039 votes and his party's nomination. He was the only Republican candidate.

Democrats had the only real contest for the county clerk position with two candidates seeking nomination. It was awarded finally to Lois Jean Owens, who polled 6,077 votes over Gerald C. Wolf's 3,825 votes. Robert M. Harrison is the Republican nominee, receiving 6,856 votes.

There was no contest in either party for the posts of county treasurer, register of deeds and drain commissioner. Nominees for treasurer are Republican Sylvester A. Leonard (7,260 votes) and Democrat Arthur H. Simsar (7,434 votes).

Democrat Ethel M. Howard polled 7,371 votes for nomination to the position of register of deeds. Her Republican counterpart is Patricia Newkirk Hardy with 7,388 votes.

Drain commissioner nominees are Republican John H. Flook, who received 7,276 votes, and Democrat Richard E. Nash with 7,300 votes.

Republicans listed two candidates for nomination to the surveyor post. Herbert S. Hicks received the nod with 4,523 votes. Defeated was Murray J. Knowles, Jr., who took 2,986 votes. Democratic nominee is Ulrich W. Stoll, receiving 7,207 votes.

In the non-partisan court of appeals contest to nominate two judges, S. Jerome Bronson with 4,597 votes and Robert J. Dunhof with 4,532 votes were Washtenaw county's top choices. John F. Foley, the third candidate, received 4,168 votes.

All three referendum proposals passed on a county-wide basis. The proposed judicial tenure commission, Proposal 1, received 11,221 "yes" votes and 3,661 "no" votes. Proposal 11, the proposed state officers compensation commission, polled 9,431 "yes" and 5,113 "no" votes. The third proposal, to change the procedure of filling vacant judgeships, also passed with 10,543 "yes" votes and 4,376 "no" votes.



SWEDISH VISITOR: Bjorn Albrektson (second from left) has worked at Dana's Chelsea plant to get a picture of American business and American way of life. Here John A. Shaner, Jr., personnel director, Albrektson, Hal Pennington, plant superintendent, and Lee Hess, plant manager, gather at the plant near the close of Albrektson's eight-week stay.

## Swedish Exchange Student Finds Chelsea 'Like Home'

Bjorn Albrektson came to the United States to take a look at business and the way of life. He came to the Dana Corp. Chelsea plant to work for eight weeks as part of an exchange program with the Chalmers Institute of Technology at Gothenburg, Sweden.

Albrektson came with the idea of seeing everything on a large scale in the U. S. He thought he would see big people, big houses and big businesses. Even though the tables were turned somewhat and Chelsea is more like home than he thought it would be, Albrektson counts that as a benefit not a flaw.

Albrektson is a third-year student at the Chalmers Institute, which he explains is one of the most famous schools in Europe. He took on the job of planning the itinerary for 180 male students who made the trip to the United States this year.

The students work at businesses from Maine to California for eight weeks and then take an intensive tour of large concerns in the East for 14 days.

The reason for the trip is the experience of seeing how business is run in America. "You can't be in business today without knowing what's going on in America," Albrektson points to export as an example of his statement. "In export, you deal a lot with America and you have to know what people are like and what (Continued on page three)



JAYCEE STEAK FRY: Guests at the Tuesday night steak fry were, standing from left, Ron Adair of Dexter, state vice-president of Division 26; Bob Padgett of Westland, state president; Don Blanchi of Montana, U. S. Jaycee vice-president; and Don DeMoss of Swartz Creek, state external vice-president. Seated are Walt Brown, Chelsea Jaycee internal vice-president; Chelsea Jaycee President Don Proctor; and Dave Rowe, chairman of the steak fry committee.

handling the various reports and announcements.

During the business meeting Walt Brown was named the "Jaycee of the Month" for his work on the Jaycee Handbook and R & R's. Neil Fahrner was named the "90-Day Wonder" for his work on the Chelsea Jaycee Fishing Contest, and Art Steinaway was named "90-Day Wonder" runner-up for his work on such projects as Jaycee jackets, state board meeting and fair projects.



**The Chelsea Standard** Telephone GR 5-3681  
 Established 1871  
 Excellence Award by Michigan Press Association  
 1951-1952-1953-1954-1955-1956  
 Walter P. Leonard, Editor and Publisher



Published every Thursday morning at 300 North Main Street, Chelsea, Mich. 48118, and second class postage paid at Chelsea, Mich., under the Act of March 3, 1879.  
 ADDRESS CORRECTION REQUESTED

Subscription Rates (Payable in Advance)  
 In Michigan: One Year \$3.00, Six Months \$1.75, Single Copies \$ .10  
 Outside Michigan: One Year \$4.00, Six Months \$2.25, Single Copies \$ .10  
 Service men or women, anywhere, 1 year \$3.00

NATIONAL NEWSPAPER ASSOCIATION  
 National Advertising Representative: MICHIGAN NEWSPAPERS, INC., 257 Michigan Ave., East Lansing, Mich. 48823



**THE LANSING REPORT**  
 FROM  
 senator  
**GIL BURSLEY**

Interim or study committees normally operate during the time when the legislature is not in session.

These bodies serve a vital purpose. They obtain facts on key issues that may require legislative action. Sometimes confusing and conflicting statements on important matters—such as this year's proposed aid bill—are resolved by postponing legislative action until an interim committee has been able to sort fact from fiction.

Normally the interim committees schedule and program is worked out by the chairman who also bears primary responsibility for preparing the committee's written report back to the next session of the legislature.

It has been my lot this year to be asked to serve as chairman of six of these committees.

The Joint Legislative Committee on Urban Mass Transportation, composed of eight senators and eight representatives, is determining what additional legislative action may be necessary to ensure that the Southeastern Michigan Transportation Authority comes up with the best possible mass transit system for the six-county area. We are also studying the proposed plans of a state department of transportation within the state government.

Another committee which I head is concerned with pesticide control. We have already had hearings at the Pesticide Research Center at Michigan State University and with the Dow Chemical Co. in Midland.

Another committee is concerned with juvenile law reform. I have several hearings including one in the Ann Arbor area. We are looking at California and Colorado's juvenile laws.

The Senate International Commerce Committee, which I have been in charge of for the past three years is presently ensuring that the State Commerce and Agricultural Departments are doing a good job of trade mission work. I am chairman of a subcommittee on international trade which I have been in charge of for the past three years.

I think you can agree that this interim study committee can keep a legislative body in a

time basis. Apart from that, however, I am most concerned with responding to the inquiries from constituents within this senatorial district. Please write me at the State Capitol—I'm always at your service.

## Spruce Trees May Be Hit With Insect

Many spruce trees this time of year are adorned with gall-like swellings on the new growth which are brown in color and resemble one-inch-long pineapples.

The galls are woody and have openings in them from which a small plant louse has emerged in the last two weeks or so.

The work of this insect, a spruce gall aphid makes spruce trees unattractive. New growth with galls doesn't develop properly and trees become misshapen.

Small trees may be killed and larger ones made unsightly, according to Irvin McFarland, Area Forester for the Michigan Department of Conservation who works out of the Co-operative Extension office in Ann Arbor.

All spruces can be infested. The galls on Colorado Blue Spruce are longer than those found on White Norway, Black Hills and other spruces.

The small, immature aphids overwinter in the shelter of the previous year's base of spruce buds.

By the following May they mature and lay eggs. The young lice hatch at the time the new growth is starting and by feeding on the base of the needles cause them to be deformed. The final effect is the formation of the gall.

For control on small trees, the galls may be hand picked and burned, followed by a dormant spray next spring before buds break.

Control on larger trees may be made by the dormant spray. Use one of the following dormant spray materials: 1) Liquid lime sulfur, 1 gallon per 24 gallons of water; 2) Benzene Hexachloride, 2 1/2 pints 10 percent emulsion or 2 pounds 12 percent wettable powder per 100 gallons of water.

Apply all sprays in April before buds break. Wet the trees down good to get spray over all the foliage.

Spray all Douglas Fir in vicinity of spruce where the galls are found on Blue Spruce, since Douglas Fir is the alternate host of the gall aphid on Blue Spruce.

**FAST FLIERS**  
 The average air speed of ducks and geese is 40 to 50 miles per hour, but ducks have been known to fly 65 to 72 miles per hour when chased.

All Music Shell, Grandstand and Calumet entertainment will be free to visitors to the 119th Michigan State Fair. The Fair opens in Detroit Aug. 23 and continues through Sept. 2.

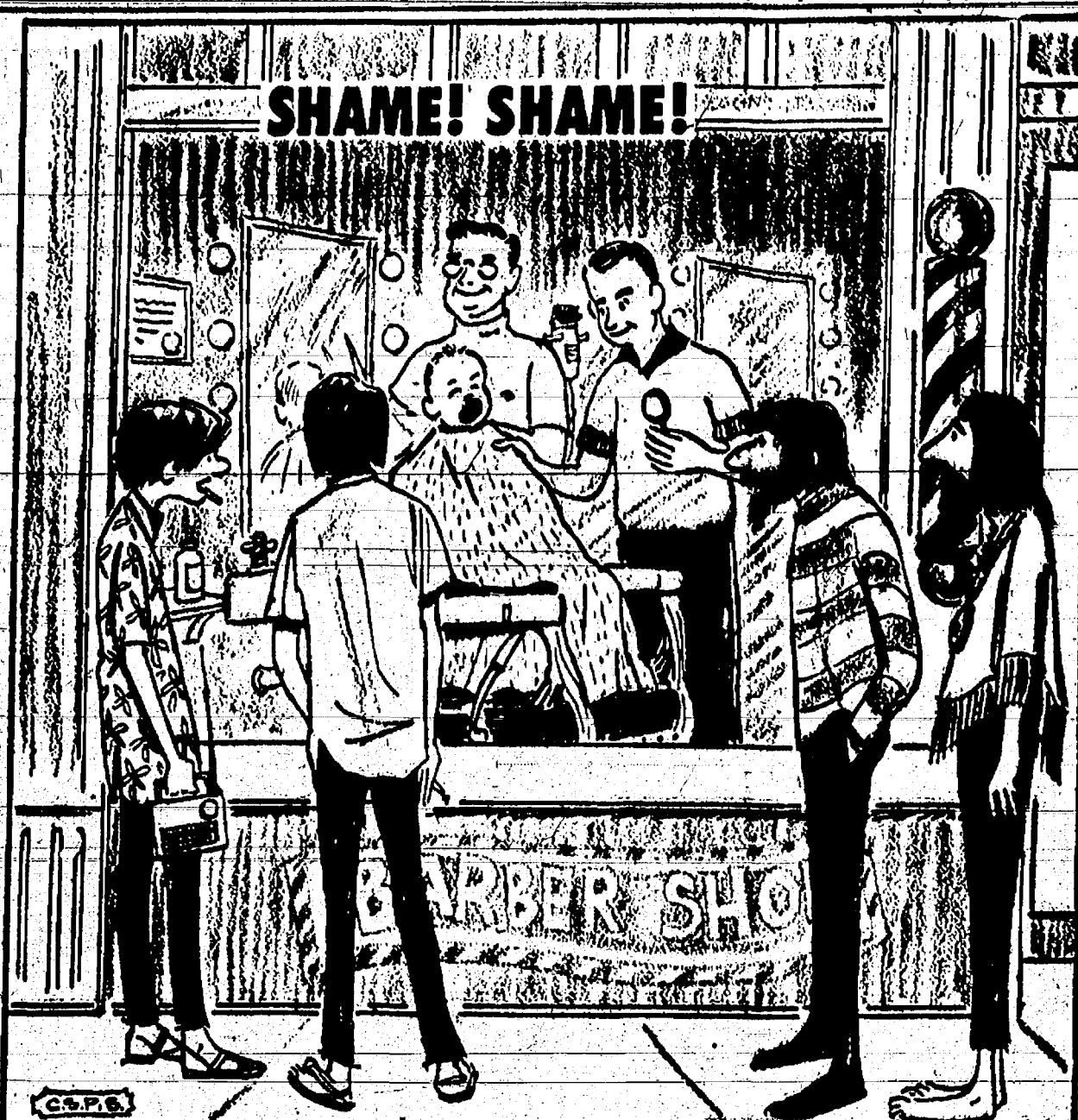
## DEXTER AMERICAN LEGION

Presents  
**KEN LEACH & The Stringalongs**

For Your  
**DANCING PLEASURE SATURDAY NIGHT**

9:30 p.m. to 1:30 a.m.

Members and Guests Only.



## MICHIGAN MIRROR

By Elmer E. White, Secretary, Michigan Press Association

**Police Role Changing**  
 Amid the turmoil of violence and lawlessness across America, the policeman must recognize his new role as peace officer and new demands of the profession, Lt. Gov. William Milliken told the Michigan Association of Chiefs of Police.

There were two distinct trends in criminal law during the last 40 years: strengthen the rights of the individual, and restrict the powers of the police. Milliken believes the changes are desirable, but that policemen often encounter difficulty because the law is confused and uncertain. It does not clearly define the powers which the officer can exercise, he says. This uncertainty discourages and demoralizes officers.

Better laws, well-trained officers, and more concerned citizens are essential if society is to survive the stress of present conditions, Milliken said.

Much uncertainty of the laws in Michigan can be removed by legislation, principally through updating criminal codes. A revised code may be ready by the next legislative session, he said. The current session included passage of legislation designed to strengthen existing laws and assure equal justice.

State Police estimate that 50 percent of the seven major felonies in Michigan, including murder, are committed by children 10 to 16 years of age. These youths represent only 15 percent of the population. The new role of the police officer requires a program of prevention so that young people view the officer as protector and friend rather than persecutor and enemy, Milliken concluded.

**Billion Dollar Shortage**  
 Retirement funds for state employees and schoolteachers will cost Michigan taxpayers a billion dollars or more in the next 20 years, according to Rep. James H. Heinze, R-Battle Creek. Heinze, who is considered an expert on the subject by his colleagues, points out that the huge amount is in addition to large sums the state is already setting aside each year.

This year \$178 million was earmarked for retirement benefits and social security payments for current service of public employees. This is nearly double the cost three years ago.

The situation results from the 1963 constitution which specifies that after Jan. 1, 1964, the legislature must set aside each year all the money needed to pay retirement benefits earned by state employees, including teachers, that year.

A shortage of funds will develop in about 18 months, says Rep. Heinze. At that time, the state will have depleted its reserve fund to pay those who retired prior to 1964. Taxpayers will then have to provide revenue for those already retired, as well as for the retirement fund specified by the new constitution.

In other words, the state is itself into a financial hole by shortchanging the retirement fund prior to 1964 by failing to set aside funds to finance the plan in effect. It must now make up this lack of financial responsibility by using current revenue to support those who have already retired and to build a fund for those who will retire.

Estimates of the amount needed to provide full pension payments for those who retired prior to 1964 were set at \$1.2 billion by a special Legislative committee earlier this year.

The committee also noted that after the next seven or eight years the problem will diminish as the number of retirees remaining on

the pension rolls for pre-1964 service gradually declines.

Rep. Heinze suggests action can be taken to help relieve the immediate problem: more flexible investment of retirement funds—to increase their earning power for the state; closer tie-in of the state pension plans with federal social security; a long-term borrowing arrangement to help overcome the immediate shortage without plunging the state into another financial crisis in the years immediately ahead.

**Shooting Stars**

**Shower To Reach Peak This Week**

Ann Arbor—The annual shower of shooting stars will reach its peak between Aug. 10 and 12, University of Michigan astronomer Hazel M. Losh says.

The Perseid meteor shower, one of the most dependable of the yearly displays in the sky, exhibits shooting stars at a higher rate than at any other time of the year—as many as one per minute. The meteors, or pieces of iron and stone, are probably no larger than a grain of sand, Prof. Losh notes. They become visible only when they enter the earth's atmosphere. The friction sets them burning, and most of them are consumed in the plunge.

Former servicemen will be honored on Veterans Day, Saturday, Sept. 24, at the Michigan State Fair. Veterans and Servicemen with credentials, will be admitted free until 3 p.m. The State Fair opens Aug. 23 and continues through Sept. 2.

**14 Years Ago...**  
 Thursday, Aug. 6, 1950—Donald S. Leonard will oppose Gov. G. Mennen Williams, seeking his fourth two-year term in the coming general election. Leonard's nomination as the Republican candidate having been conceded by other candidates as early as 2 a.m. Wednesday. Philip A. Hart, Gov. Williams' choice, won over George S. Fitzgerald for the Democratic nomination for the lieutenant governorship. The Republican nomination for sheriff in Washtenaw county went to Edwin L. Klager who left the six candidates, seeking the nomination by approximately 841 votes. The Democratic candidate is Lawrence Oltersdorf who defeated Robert Kidd.

Tuesday, Aug. 10, from 6 to 8 p.m., qualified electors of the Chelsea Agricultural Schools district will vote on the sale of the Freer and North Lake rural schools.

At the Village Council meeting Monday evening a proposal to appropriate money toward sharing the cost of a new bridge over the Lett Creek crossing on McKinley Rd. was turned down. Reasons given were that there is a question as to the legality of making the appropriation and, also, that it would mean "undue taxation on village property owners."

## JUST REMINISCING

Items Taken from the Files of The Chelsea Standard

### 4 Years Ago...

Thursday, Aug. 6, 1964—On Monday, Aug. 10, the first vacation Bible school to be held in many years at the Congregational church will begin for classes from junior-senior high age down to children who will be three years old by Dec. 1, 1964. Chelsea Baptist church on Wilkinson St. is sponsoring a vacation Bible school program next week for all area children. St. Paul's United Church of Christ has completed plans for a vacation Bible school program to be held at the church each morning, Monday through Friday, for the next two weeks.

Summer recreation program total attendance this year was 6,077, or a weekly average of 1,012 youngsters, and does not include the attendance for the evening baseball and softball programs.

The 58-day-old strike against Michigan Consolidated Gas Co. by the Building Services Employees Union Local 80 was ended Monday when the union voted to accept a new three-year contract providing wage and fringe benefits totaling 37.27 cents an hour over the three-year period. General wage increases are 14.5 cents an hour for the first year, 10 cents an hour for the second year and 12 cents an hour for the third year.

Pouring of the monolithic concrete used in the construction of the new grain storage building at Chelsea Milling Co. began at 7 a.m. Monday and has continued around the clock. It is scheduled to be completed today.

Mrs. Dudley Holmes, Chelsea Community Blood Bank chairman, reported this week that the balance of blood credited to the Chelsea Blood Bank at this time is 40 pints. This is the remainder of the amount donated at the last Blood Bank clinic.

Plans for Chelsea's 1964 Community Fair are going forward as the opening date of Aug. 26 approaches.

### 14 Years Ago...

Thursday, Aug. 6, 1950—Donald S. Leonard will oppose Gov. G. Mennen Williams, seeking his fourth two-year term in the coming general election. Leonard's nomination as the Republican candidate having been conceded by other candidates as early as 2 a.m. Wednesday. Philip A. Hart, Gov. Williams' choice, won over George S. Fitzgerald for the Democratic nomination for the lieutenant governorship. The Republican nomination for sheriff in Washtenaw county went to Edwin L. Klager who left the six candidates, seeking the nomination by approximately 841 votes. The Democratic candidate is Lawrence Oltersdorf who defeated Robert Kidd.

Tuesday, Aug. 10, from 6 to 8 p.m., qualified electors of the Chelsea Agricultural Schools district will vote on the sale of the Freer and North Lake rural schools.

At the Village Council meeting Monday evening a proposal to appropriate money toward sharing the cost of a new bridge over the Lett Creek crossing on McKinley Rd. was turned down. Reasons given were that there is a question as to the legality of making the appropriation and, also, that it would mean "undue taxation on village property owners."

so, that it would mean "undue taxation on village property owners."

Next Wednesday, Aug. 11, is the opening day of the annual Washtenaw county 4-H Fair at Ann Arbor. It has been announced that approximately 2,500 entries will be exhibited. The Fair brings to a close the summer 4-H club work and includes dairy, beef, sheep, swine and horse projects, food preparation, food preservation, photography, and vegetable and flower gardening.

Chelsea Community Fair dates have been set for Sept. 22, 23, 24 and 25, it was announced following the meeting of the Fair Association Thursday evening.

The Rev. M. W. Brueckner, who some time ago announced his resignation as pastor of Zion Lutheran church and his Aug. 1 retirement from the ministry, preached his final sermon as pastor Sunday morning, the 55th anniversary of his ordination.

Mrs. Inez Rank received a degree at commencement exercises at Michigan State Normal College, Ypsilanti, after teaching in Grass Lake for 28 years.

### 24 Years Ago...

Thursday, Aug. 10, 1940—Members of the Michigan Press Association from this part of the state will meet on Saturday at the Cassidy Lake Honor Camp.

The publishers will hold a business meeting and round-table discussion at 10 a.m., followed by a tour of inspection. Dinner will be served by inmates of the camp at 1 p.m. after which talks will be given by Auditor General Vernon J. Brown, Warden Harry H. Jackson of Southern Michigan Prison, and Garrett Heyns, director, Department of Corrections.

Mr. and Mrs. Charles Bycraft entertained at a \$1.80 lawn potluck dinner party Saturday evening in honor of their daughter, Rita, and son, Charles, Jr., both of whom were home on furloughs—Rita from Seattle, Wash., and Charles from Wildwood, N. J.

Willard O. Eismann, who is home on a 10-day leave from Camp Perry, Va., was honor guest at a supper given by his parents, Mr. and Mrs. Otto Eismann, on Sunday evening.

A plan worked out by the Conservation Department to control fox damage by trapping the animals in areas where losses are excessive and by instructing farmers in methods of trapping dogs to effect this week. Trapper instructors have been finalizing instructions for the past several weeks in trouble areas in southern Michigan counties. The Department has \$20,000 to use for fox control, a special appropriation voted by the legislature early this year.

You can fight off dampness the house by heating the house for a short time. Then open doors and windows to let the air out. An exhaust fan will force it out.

Finish coats of house paint normally can be applied to about 100 square feet of surface per gallon. Primer can be applied about 450 square feet per gallon.

A good joke is heard far and wide for many years.

**MONEY TROUBLE?**  
**ONE PLACE TO PAY**  
 Credit Management Service  
 662-2565  
 342 Municipal Court Bldg.  
 Ann Arbor  
 State Licensed and Bonded

**Cleary Graduates Are in Demand**

Because Cleary College specializes in training you for a successful management, accounting or secretarial career, more jobs are available than Cleary can supply graduates to fill!

Cleary College offers one, two and four year programs leading to a diploma, associate degree or bachelor's degree. At Cleary you learn more in order that you may earn more upon graduation. And the prestige of a specialized Cleary business education assures you of a more rewarding future.

Attention June Graduates  
**FALL TERM STARTS SEPTEMBER 23, 1963**

It's not too soon to register for the fall of 1963. Reserve your courses now at the hours to suit your schedule and requirements.

Day and Evening Classes—8 a.m. through 3 p.m. daily; evening class hours available Monday through Friday for one, two or three nights a week.

**SEND COUPON TODAY**  
 Or phone the Cleary College Admission Office, HU 3-4400. Get the specialized education you need for business success.



**CLEARY COLLEGE**  
 SPECIALISTS IN BUSINESS EDUCATION SINCE 1909  
 2178 Washtenaw, Ypsilanti, Michigan 48197  
 Please send me your Free Catalog. I am interested in the \_\_\_\_\_ term.

Name \_\_\_\_\_  
 Address \_\_\_\_\_  
 City \_\_\_\_\_ State \_\_\_\_\_  
 Zip Code \_\_\_\_\_ Phone \_\_\_\_\_

## Uncle Lew from Lima Says:

DEAR MISTER EDITOR:

Clem Webster told the fellers at the country store Saturday night they have come out with a deodorant called Anonamous. It don't make you smell no better, Clem said, but after you put it on people can't figger who was purisping and who wasn't. And Clem said he had saw by the papers where they have started a Gamblers Anonamous fer them addicts that was hooked on crossword puzzles and TV guessing games and such things.

Ed Doolittle was of the opinion the reason the anonamous clubs is growing so fast was on account of folks joining 'em just so they can get to see their neighbors onct a month. Ed said we was bad in need of a Meetings Anonamous where, if you feel you got to go to a meeting, you call a friend and he comes and locks you up in the house.

Zeke Grubb said he reckoned the reasoning behind all the anonamous clubs was the idea they was strength in unity, but he was of the opinion a heap more is done by a feller by hisself than in a bunch. He recollected when Lindburg flew over the ocean by hisself and the news was reported in Washington, one Congressman didn't look surprised. "When a committee does it, let me know," he said.

Ed was disagreed with Zeke on this point, said the idea of people with the same problem getting together and helping one another was a good one. For instant, said Ed, he would like to get his old lady in a Nag Anonamous. That feller Edison didn't make the first talking machine, said Ed, the Lord did. Edison just made one you could cut off. Ed said if it wasn't that his old lady had about 30 pounds on him, he might have had

to join the Wife Beaters Anonamous a long time ago. Ed claimed us fellers gitting together at the store ever Saturday night was a anonamous club. He said his old lady told him we had ought to call the store Oxygen because we couldn't breathe unless we was in it. Ed allowed that we was a Talker Anonamous Club because all we git to do at home is listen.

Josh Clodhopper, that ain't never took a drink in his life, said he thought Alcoholics Anonamous had done a good job. He only hoped, he said, we could git a Federalolics Anonamous, that people had got to depending on Government so bad they couldn't git along without it. He was in favor of a Spenders Anonamous in Congress and a Handout Anonamous fer the able bodied bums in this country.

Personal, Mister Editor, I don't understand all I know about these anonamous clubs, but from what I have saw in the papers in the last few years, they was doing a heap of good. It might be a good idea to start Anonamous Anonamous, so ever time you got a problem all your friends will sudden say they don't even know you and you got to try and work it out by yourself.

Yours truly,  
 Uncle Lew.

**Howell Livestock Auction**  
 Every Monday at 2 p.m.  
 Southeastern Michigan's largest and most complete Auction Market.  
 For Trucking Information Call Howell 546-2470

**Blaess Elevator Co.**  
 DIV. OF LARROW FEED CO.  
 Phone 479-6511 Chelsea, Mich.  
**toweles seeds**  
 Rover is Toweles' brand name. 10 is a variety designation.

## Rover Brand 10 ALFALFA



Permanent pastures or hillside a problem? Plant 'em to Toweles remarkable Rover... the creeping alfalfa that means extra dollars from those hard to manage acres.

Rover's creeping roots sprout multiple plants that defy close grazing... take hold on hillside... withstand winter heaving. Sub-surface root networks thrive through long dry spells.

If you want an answer to permanent pasture or hillside problems... an answer that means more profits for 4 to 5 years, come talk Rover at:

**Blaess Elevator Co.**  
 DIV. OF LARROW FEED CO.  
 Phone 479-6511 Chelsea, Mich.  
**toweles seeds**  
 Rover is Toweles' brand name. 10 is a variety designation.



## Windshield Hit Stone from Dump Truck

If you ever had a stone roll into the front of your car, you know how frustrating it can be. Even worse, if the stone is large enough to crack the windshield, the driver is in for a real headache. This is exactly what happened to James V. Pearsall, a 1968 Ford Mustang driver, when a stone from a dump truck hit his windshield.

## The Serviceman's Corner



JAMES V. PEARSALL

### Airman James Pearsall Completes Air Force Basic Training Course

San Antonio—Airman James V. Pearsall, son of Mr. and Mrs. Fred W. Pearsall of 34 Sycamore Dr., Chelsea, Mich., has completed basic training at Lackland AFB, Tex. He has been assigned to the Air Force Technical Training Center at Chanute AFB, Ill., for specialized schooling as an aircraft equipment repairman. Airman Pearsall is a 1967 graduate of Chelsea High school.

Subscribe Today to The Standard!



CAPT. DARYL B. KEEZER

### Capt. Daryl Keezer Completes Training as Air Force Navigator

Sacramento, Calif.—Captain Daryl B. Keezer, son of Mr. and Mrs. Elwood B. Keezer of 410 McKinley St., Chelsea, Mich., has been awarded silver wings upon graduation from U. S. Air Force navigator training at Mather AFB, Calif.

Captain Keezer is being assigned to duty with the Military Airlift Command.

The captain, a graduate of Chelsea High school, received his B.S. degree in 1964 from Oakland University, Rochester, Mich.

He was commissioned in 1965 upon graduation from Officers Training School at Lackland AFB, Tex.

Captain Keezer's wife, Lynn, is the daughter of Mr. and Mrs. Charles R. Heard of 13840 Rainbow Dr., Gregory, Mich.



MICHAEL S. HUGHES

### Airman Michael Hughes Assigned for Air Force Specialized Training

San Antonio—Airman Michael S. Hughes, son of Mr. and Mrs. Robert W. Hughes of 6651 Weikner Rd., Chelsea, Mich., has completed basic training at Lackland AFB,

## Mexican Musical Tour

(Continued from page one)

zealous crowd which would "clap, boo and make faces while you were playing."

In Mexico City, the musicians gave concerts in the afternoon at a Mormon school and in the evening for the "wealthy people." Heidi missed not having much free time in Mexico's capital city, although she did visit the Latin American Tower from which she could see the entire metropolis. Guadalajara was another city Heidi reports enjoying very much, although the reason may have been the presence of a lot of free time. "We went to markets and did a lot of shopping," Heidi said. Besides playing three concerts, they also squeezed in a soccer game and a side trip to San Pedro.

At Mazatlan on the Pacific Ocean, the musicians watched an diver jumped hundreds of feet from a cliff into the water. However, Heidi adds wryly, he came around later with a hat.

A Mexican professor who had studied at the U-M joined the group in Merida and stayed with it until they reached San Antonio, Tex. He acted as an "ombudsman" for the students, advising them on the best places to buy and helping solve problems.

At Culiacan, the professor's home town, the musicians stayed in "beautiful homes." "The home I stayed in," Heidi relates, "had a huge swimming pool, marble floors and crystal and glass all over the house."

A side trip at Durango brought the group to a glass blowing factory, and they also visited the country club.

The accommodations in Monterrey proved disappointing, and a three-day stay was shortened to one.

After Monterrey, the MYI visitors returned to the United States to play two concerts at the HemisFair in San Antonio. From then on it was a series of concerts interspersed with bus rides through Dallas, Wichita, Independence, Mo., Sioux City, Ia., Davenport, Ia., Elkhart, Ind., Grand Rapids, Flint and Delta College near Saginaw.

Tex. He has been assigned to the Air Force Technical Training Center at Keesler AFB, Miss., for specialized schooling as a communications-electronics specialist. Airman Hughes, a 1968 graduate of LaPorte (Ind.) High school, attended Eastern Michigan University in Ypsilanti, Mich.

## Two Killed By Speeding Car

(Continued from page one)

deputies estimated as a speed of 100 mph.

A diagram by the Sheriff Department told this story of the accident:

Bignell's car traveled 372 feet along the east shoulder of M-52 and then moved onto the road and left 84 feet of skid marks across the northbound lane to the center line. The car then swerved into the southbound lane and went 58 feet until it hit six wooden guard posts located on the west shoulder of the road.

After traveling 44 more feet, the car hit the Kincers. Jimmy Kincer leaped over one of the fence posts seconds before.

After hitting and killing the Kincers, Bignell's car moved 88 feet along the west shoulder and swerved back across the road a second time, leaving 47 feet of surface skid marks. For a third time, the car headed across the road, this time in a broadside skid for 56 feet on the road. The car came to a stop after sliding across the road 88 feet from the west shoulder of M-52.

Dr. Jerry Waidyke of the Chelsea Medical Clinic, a deputy medical examiner, pronounced the Kincers dead and ordered the bodies taken to University Hospital for an autopsy.

Later, at the County Jail, Bignell refused to take a breath test for intoxication and refused to talk about the accident.

Later, at the County Jail, Bignell refused to take a breath test for intoxication and refused to talk about the accident.

Later, at the County Jail, Bignell refused to take a breath test for intoxication and refused to talk about the accident.

Later, at the County Jail, Bignell refused to take a breath test for intoxication and refused to talk about the accident.

Later, at the County Jail, Bignell refused to take a breath test for intoxication and refused to talk about the accident.

Later, at the County Jail, Bignell refused to take a breath test for intoxication and refused to talk about the accident.

Later, at the County Jail, Bignell refused to take a breath test for intoxication and refused to talk about the accident.

Later, at the County Jail, Bignell refused to take a breath test for intoxication and refused to talk about the accident.

Later, at the County Jail, Bignell refused to take a breath test for intoxication and refused to talk about the accident.

Later, at the County Jail, Bignell refused to take a breath test for intoxication and refused to talk about the accident.

Later, at the County Jail, Bignell refused to take a breath test for intoxication and refused to talk about the accident.

Later, at the County Jail, Bignell refused to take a breath test for intoxication and refused to talk about the accident.

Later, at the County Jail, Bignell refused to take a breath test for intoxication and refused to talk about the accident.

Later, at the County Jail, Bignell refused to take a breath test for intoxication and refused to talk about the accident.

Later, at the County Jail, Bignell refused to take a breath test for intoxication and refused to talk about the accident.

Later, at the County Jail, Bignell refused to take a breath test for intoxication and refused to talk about the accident.

Later, at the County Jail, Bignell refused to take a breath test for intoxication and refused to talk about the accident.

Later, at the County Jail, Bignell refused to take a breath test for intoxication and refused to talk about the accident.

Later, at the County Jail, Bignell refused to take a breath test for intoxication and refused to talk about the accident.

Later, at the County Jail, Bignell refused to take a breath test for intoxication and refused to talk about the accident.

Later, at the County Jail, Bignell refused to take a breath test for intoxication and refused to talk about the accident.

Later, at the County Jail, Bignell refused to take a breath test for intoxication and refused to talk about the accident.

Later, at the County Jail, Bignell refused to take a breath test for intoxication and refused to talk about the accident.

Later, at the County Jail, Bignell refused to take a breath test for intoxication and refused to talk about the accident.

Later, at the County Jail, Bignell refused to take a breath test for intoxication and refused to talk about the accident.

Later, at the County Jail, Bignell refused to take a breath test for intoxication and refused to talk about the accident.

Later, at the County Jail, Bignell refused to take a breath test for intoxication and refused to talk about the accident.

Later, at the County Jail, Bignell refused to take a breath test for intoxication and refused to talk about the accident.

Later, at the County Jail, Bignell refused to take a breath test for intoxication and refused to talk about the accident.

Later, at the County Jail, Bignell refused to take a breath test for intoxication and refused to talk about the accident.

Later, at the County Jail, Bignell refused to take a breath test for intoxication and refused to talk about the accident.

## Two Killed By Speeding Car

(Continued from page one)

deputies estimated as a speed of 100 mph.

A diagram by the Sheriff Department told this story of the accident:

Bignell's car traveled 372 feet along the east shoulder of M-52 and then moved onto the road and left 84 feet of skid marks across the northbound lane to the center line. The car then swerved into the southbound lane and went 58 feet until it hit six wooden guard posts located on the west shoulder of the road.

After traveling 44 more feet, the car hit the Kincers. Jimmy Kincer leaped over one of the fence posts seconds before.

After hitting and killing the Kincers, Bignell's car moved 88 feet along the west shoulder and swerved back across the road a second time, leaving 47 feet of surface skid marks. For a third time, the car headed across the road, this time in a broadside skid for 56 feet on the road. The car came to a stop after sliding across the road 88 feet from the west shoulder of M-52.

Dr. Jerry Waidyke of the Chelsea Medical Clinic, a deputy medical examiner, pronounced the Kincers dead and ordered the bodies taken to University Hospital for an autopsy.

Later, at the County Jail, Bignell refused to take a breath test for intoxication and refused to talk about the accident.

Later, at the County Jail, Bignell refused to take a breath test for intoxication and refused to talk about the accident.

Later, at the County Jail, Bignell refused to take a breath test for intoxication and refused to talk about the accident.

Later, at the County Jail, Bignell refused to take a breath test for intoxication and refused to talk about the accident.

Later, at the County Jail, Bignell refused to take a breath test for intoxication and refused to talk about the accident.

Later, at the County Jail, Bignell refused to take a breath test for intoxication and refused to talk about the accident.

Later, at the County Jail, Bignell refused to take a breath test for intoxication and refused to talk about the accident.

Later, at the County Jail, Bignell refused to take a breath test for intoxication and refused to talk about the accident.

Later, at the County Jail, Bignell refused to take a breath test for intoxication and refused to talk about the accident.

Later, at the County Jail, Bignell refused to take a breath test for intoxication and refused to talk about the accident.

Later, at the County Jail, Bignell refused to take a breath test for intoxication and refused to talk about the accident.

Later, at the County Jail, Bignell refused to take a breath test for intoxication and refused to talk about the accident.

Later, at the County Jail, Bignell refused to take a breath test for intoxication and refused to talk about the accident.

Later, at the County Jail, Bignell refused to take a breath test for intoxication and refused to talk about the accident.

Later, at the County Jail, Bignell refused to take a breath test for intoxication and refused to talk about the accident.

Later, at the County Jail, Bignell refused to take a breath test for intoxication and refused to talk about the accident.

Later, at the County Jail, Bignell refused to take a breath test for intoxication and refused to talk about the accident.

Later, at the County Jail, Bignell refused to take a breath test for intoxication and refused to talk about the accident.

Later, at the County Jail, Bignell refused to take a breath test for intoxication and refused to talk about the accident.

Later, at the County Jail, Bignell refused to take a breath test for intoxication and refused to talk about the accident.

Later, at the County Jail, Bignell refused to take a breath test for intoxication and refused to talk about the accident.

Later, at the County Jail, Bignell refused to take a breath test for intoxication and refused to talk about the accident.

Later, at the County Jail, Bignell refused to take a breath test for intoxication and refused to talk about the accident.

Later, at the County Jail, Bignell refused to take a breath test for intoxication and refused to talk about the accident.

Later, at the County Jail, Bignell refused to take a breath test for intoxication and refused to talk about the accident.

Later, at the County Jail, Bignell refused to take a breath test for intoxication and refused to talk about the accident.

Later, at the County Jail, Bignell refused to take a breath test for intoxication and refused to talk about the accident.

Later, at the County Jail, Bignell refused to take a breath test for intoxication and refused to talk about the accident.

Later, at the County Jail, Bignell refused to take a breath test for intoxication and refused to talk about the accident.

Later, at the County Jail, Bignell refused to take a breath test for intoxication and refused to talk about the accident.

Later, at the County Jail, Bignell refused to take a breath test for intoxication and refused to talk about the accident.

In land and water area combined, Michigan is the largest state east of the Mississippi and ranks tenth in the nation. Its area includes 57,022 square miles of land area and 88,760 square miles of water surface.

**CIVIL RIGHTS BILL**  
The Congress passed and sent to the President a civil rights bill which contained a ban against racial discrimination in housing. This is the fourth major civil rights bill passed since 1960.

## Get Free Gold Bell stamps with

## MARATHON GASOLINE

Now at  
I-94 and CHELSEA-MANCHESTER RD.  
(OPPOSITE SCHUMM'S)  
"We Will Accept Marathon Credit Card Applications"

## It's Later Than You Think New Boys' and Girls' FALL & WINTER WEAR

Now in Stock for

## BACK TO SCHOOL A+ Bargains!

Lay Away Now For Best Selections!

Only a little down holds until school.

## DANCER'S

"Chelsea's Friendly Dept. Store"

REMEMBER  
SIDEWALK DAYS AUG 16-17

## CLEARANCE FRIGIDAIRE Air Conditioners

We have the famous Frigidaire room air conditioners in stock for immediate installation. Why swelter through another day? Check our low prices and see how easy it is to enjoy cool comfort for the rest of the hot summer days and nights.

000, 8,000, 9,000, 12,000 & 15,000 BTU sizes In Stock . . . and all

## At Reduced Prices!

## MEABON'S TV, FURNITURE & APPLIANCE

1170 M-52 South, Chelsea Phone GR 5-5191

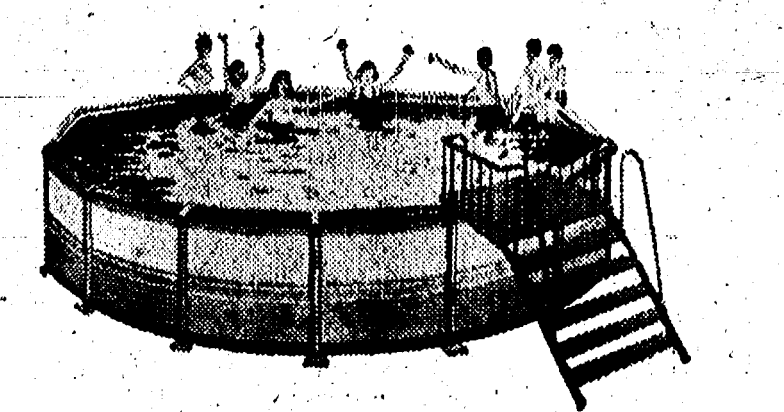
## SWIM POOL CLEARANCE!

THIS IS IT! EVERYTHING MUST GO!

"EXAMPLE"

## GIGANTIC 24' x 4' - 6' WINTERIZED MUSKIN

"Fill Only Once - Never, Never Take Down"



Winterized Liner  
5 Year Liner  
5 Year Frame  
Bridge Construction  
Wide Sit-On Rail  
Color Sidewall  
Bottom Channel  
Sanitized Liner  
Installs Easily  
No Taxes - No Fence!

Reg. \$420  
SAVE 34%  
**\$277**

## VISCOUNT POOL AND SPORTS

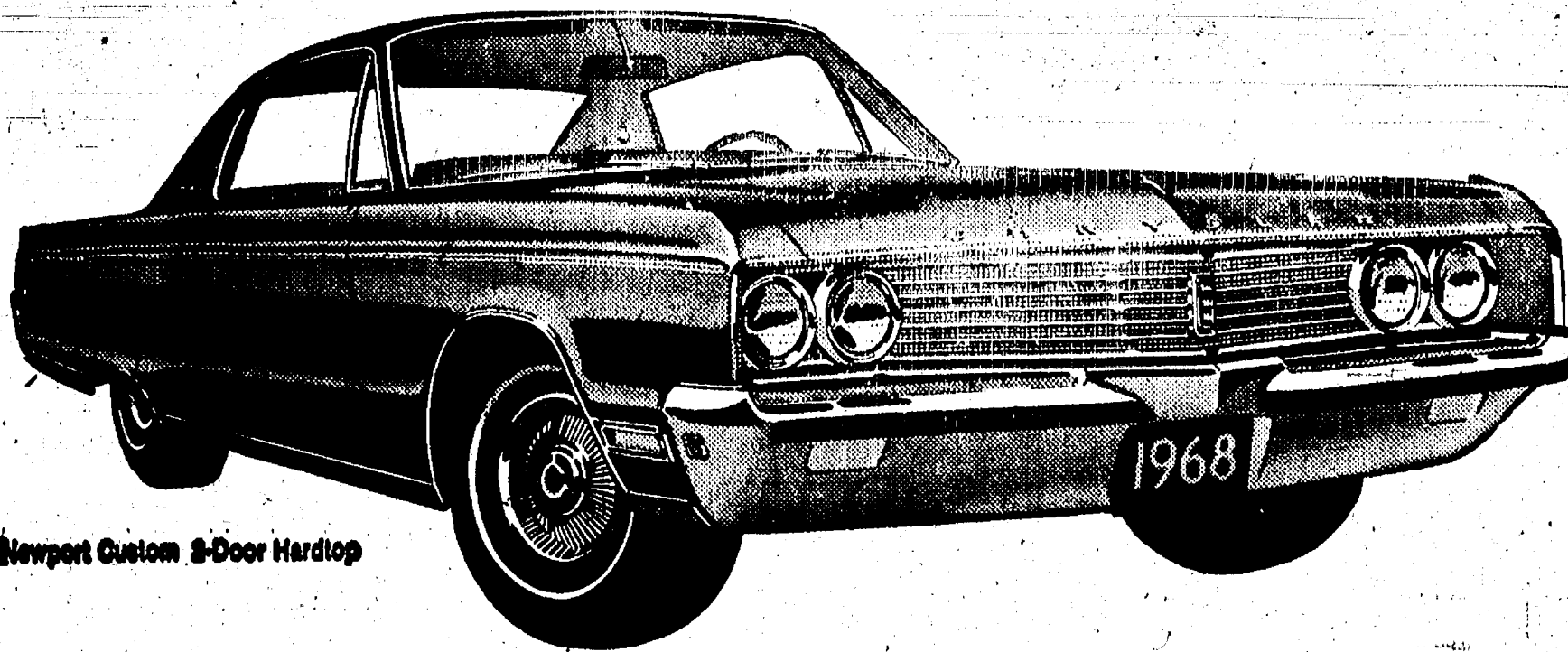
ANN ARBOR 2450 W. STADIUM 761-0106

LIVONIA 34750 Plymouth Rd. 261-8580

Clean up with the Unbeatables

# FINAL CLEARANCE '68 CHRYSLERS

- Great year-end buys from those unbeatable guys • Newports, Newport Customs, Chrysler 300s, New Yorkers
- Everything goes to wind up a great selling year!
- Act now while there's a good model and color selection



Newport Custom 3-Door Hardtop

FOR YEAR-END CLEARANCE BARGAINS ON THE SUCCESS CARS OF THE YEAR YOU GOTTA SEE



THE UNBEATABLES

AUTHORIZED DEALERS CHRYSLER MOTORS CORPORATION

G. A. SALES & SERVICE • 1185 Manchester Rd.



Ads  
Taken  
Till 5 p.m.  
Tuesday

IT'S EASY TO  
BUY-SELL-RENT-  
HIRE & FIND WITH

**WANT ADS**

Just  
Phone  
GR 5-3500

## WANT ADS

The  
Chelsea Standard

## WANT AD RATES

PAID IN ADVANCE—All regular advertisements, 50 cents for 25 words or less, each insertion. Count each figure as a word. For more than 25 words add 2 cents per word for each insertion. "Blind" ads or box number ads, 50c extra per insertion.

CHARGE RATES—Same as each in advance, with 15 cents bookkeeping charge if not paid before 5 p.m. Tuesday preceding publication. Pay in advance, send cash or stamps and save 15 cents.

DISPLAY WANT ADS—Rate, \$1.10 per column inch, single column with only 8-point and 14-point light type.

CARDS OF THANKS or MEMORIALS—Single paragraph style, 10c per insertion for 10 words or less; 2 cents per word beyond 50 words. Minimum, 1 inch.

COPY DEADLINE—5 p.m. Tuesday week of publication.

TRAVEL TRAILERS—13-ft. and up; 10x55 ft. trailers. John R. Jones-Trailer Sales, Gregory, Mich. Phone 498-2855. 43tf

SEE US for transit mixed concrete. Klump Bros. Gravel Co. Phone Chelsea 479-2712, 4950 Loveland Rd., Grass Lake, Mich. 40tf

WORK SHOE  
HEADQUARTERS

Famous Red Wing Brand  
\$10.95 to \$23.95

Foster's Men's Wear 21tf

## RUBBISH HAULING

Write  
**BILL MOUCH**  
1971 Doyle Rd., Gregory, Mich.  
Phone Gregory 498-2852 32tf

CUSTOM SPRAYING—Voco interior white farm painting. J. L. Bird, phone 517-547-5447, Marquette Beach. 31tf

FOR SALE—1967 Triumph TR6R. Good condition. Ph. 475-5501 after 6 p.m. 48

BIG GARAGE SALE—Give-away prices. Kitchenwares, household items, furniture, clothing, tools, lawn equipment. All kinds of "stuff 'n' things." Aug. 16-17, 9 a.m. to 6 p.m. 8141 Mast Rd., Dexter. 47

SOLID VINYL or aluminum siding. Before you sign a contract get our free estimate. Only top quality products and workmanship. 34 years construction experience. Dore Edwards, 5450 Conway Rd., Chelsea, Mich. Phone 479-4231 from 6-9 p.m. 48

HOUSE FOR SALE in Chelsea. 3 bedrooms, living room, built in kitchen, full size basement. Phone 751-2910 Paige Realtors. 7

WANTED TO BUY—Approximately 150 acres in Chelsea area. Call collect 1-425-4600, or write Lou Sanderson, 20129 Joy Rd., Westland, Mich. 48185 Agent. 7

ROCK SHOP—Summer sale. Good selection of gem cutting material as well as finished jewelry and gift items. Also fossils, minerals, crystals, wood carvings, driftwood and Indian artifacts. Waterloo Road at Bush Road, just west of Casside Lake School. 7

MASONIC EASTERN STAR PICNIC—Aug. 15, 6:30 p.m., Pierce Park. Bring table service and dishes. Music, coffee, milk furnished. 7

HOUSE FOR SALE—2-bedroom, 1-bath, beam construction, kitchen, living room combination with large windows overlooking private golf course. North Lake private. 1,000 sq. ft. of living space with outside area for expansion. Large 2-car garage detached. Located off hard-top road. 51-47 VA mortgage. Chelsea School district. \$26,500. Call Chelsea 475-4470 after 5:30 p.m. 8

HORSES—1-year-old Appaloosa gelding. Two-year-old Appaloosa stud. Call 475-8742. 7

PEACHES—Place order now for tree-ripened fruit. Open daily 9 a.m. to 8 p.m. Higgins & Son, Orchard, 18857 W. Austin Rd., Manchester, Phone 428-5041. 8

## WANT ADS

CAR RENTAL by the day, week, end, week or month. Full insurance coverage, low rates. Call Lyle Christwell at Palmer Motor Sales, GR 5-3271. 25tf

## REAL ESTATE

Need Listings  
Lake Property - Farms  
Vacant Parcels

LOCAL SALESMAN

**H. T. HAYNES**

13895 Sauer Drive, North Lake

Phone 475-7157

EDWARDS REAL ESTATE  
AND INSURANCE

Phone 482-8570 31tf

See Us for

**FORMAL WEAR**

Rentals for all occasions.  
5 new colors available.

Foster's Men's Wear 4

Do you want a home or cottage on a lake, a farm or country home, a building site? We have them.

**Eugene R. Young,**  
Broker

Phone 878-3792

Mary Allen, 879-3826

Virginia Visel, 426-2224 30tf

GEORGE OUSLEY'S Tree Service  
Trimming, removing, pruning.  
Fully insured. Chelsea 475-1591 or  
475-8784. 10

**USED BIKES!**

We have a complete selection  
of used bikes from 90 to 250 cc.

NEW Suzuki, 305 cc. \$769

NEW Suzuki, 250 cc. \$699

Both with 6-speeds and 12 month  
or 12,000 mile warranty!

**Suzuki - Ann Arbor**

4040 Washtenaw  
at US-23 and Washtenaw 8

**All Insurance Needs**

In the convenience of your own  
home - or mine.

**N. H. Miles, Allstate**

Call GR 5-3334 after 6 p.m. 7

**Ladies' and Girls'**

**SUMMER**

**SHOES**

Up to 1/2 off

at

**DANCER'S**

FOR SALE—Household furniture  
and appliances on Aug. 8, 9, 10 at  
5965 Sibley Rd., Chelsea. Phone  
475-8530. 7

TEACHING MOTHER wishes to  
have responsible woman to care  
for a kindergarten child half day.  
Must be within walking distance  
from North school. Phone 479-7091.  
475-8530. 8

MISSING for some time — A  
number of folding chairs with  
"Staffan" on back and some with  
green upholstery, no name. Any  
one with any information call  
8-4417. 8

NOTICE — Norma's Beauty Shop  
will close August 12 to 20. 7

## WANT ADS

WORK SHOE  
HEADQUARTERS

Famous Red Wing Brand  
\$10.95 to \$23.95

Foster's Men's Wear 21tf

WANTED — Chelsea teacher with  
seven children wants to rent  
country home with acres and out  
buildings. Contact Mr. Lane at  
Chelsea High School or Mr. Conklin  
at Chelsea Jr. High. 52tf

FEMALE HELP WANTED — Ma-  
ture woman to care for elderly  
gentleman from 11 p.m. to 7 a.m.  
Phone 683-0754. 47tf

For your household and cosmetic  
needs call your

**Fuller Brush Dealer**

475-7130 41tf

**Big Inventory Sale**

20% off new '68 Ski Doo's with  
full one-year warranty. Ski Doo  
clothing and accessories. Also two  
used Ski Doo's.

**Deatrick**

**Sales & Service**

18100 M-52, 475-8120 21tf

**THIS WEEK'S**

**SPECIAL**

1962 FORD

1-2-Ton Pick-up

Only

\$295.00

'68 Mustang Hard Top

'68 Fairlane Hard Top

'66 Ford 4-door

'66 Fairlane 500 XL Hardtop

'65 Galaxie 500 4-door

'65 Ford Station Wagon

'65 Ford 4-Door (2)

'65 Pontiac Wagon

'65 Mercury 2-Door

'64 Ford 4-Dr. Hard Top

'63 Ford 9-Pass. Wagon

'63 Ford 6-Pass. Wagon

'63 Chev. Convertible

'63 Falcon Wagon (2)

'62 Ford 6-Pass. Wagon

'62 Chev. 4-door Hardtop

'62 Fairlane 2-door

**Trucks**

'63 Chev. 3/4 Ton

'61 Chev. Panel

'60 International 1 1/2 Ton

'56 Ford 3/4 Ton (2)

**BEST**

**SELECTION**

**IN TOWN!**

**PALMER FORD**

Phone GR 5-3286

Open Mon., Wed. & Fri. Till 9:00

PATRICK & COOK — Free esti-  
mates on aluminum siding, gut-  
ters, awnings, additions, roofing  
and general maintenance. Please  
call Chelsea 479-4533. 7

FOR SALE—Empty 55 gal. drums.  
Pick-up \$17.50 each. Approx. 25  
drums—Standard Oil Agent. Ph.  
475-8131. 7

GO KART FOR SALE — Needs  
clutch. Call 475-814. 7

FOR SALE—Chubby size clothes,  
8 1/2-10 1/2. Better and school  
dresses, blouses, winter coat. Call  
475-5177. 7

**REAL ESTATE**

**FOR SALE**

9 VACANT ACRES, perfect for  
homes.

32 ACRES VACANT, 4 miles out.  
Little rolling.

3 ACRES with 4-bedroom modern  
home, 1 1/2 miles out.

4-BEDROOM HOME on 2 lots. 2 1/2  
baths, full basement, insulated.  
2-car garage.

**Kern Real Estate**  
Phone 475-8583 71tf

**EXCAVATING**

Basements, bulldozing, gravel,  
driveways and parking lots.  
Topsoil.

**FREE ESTIMATES**

**Deatrick's**  
**Sales & Service**  
Phone 475-8120 anytime 15tf

ANTIQUES—18100 M-52, Chelsea.  
Phone 475-8120. 47tf

WANTED—Bartender, pay excel-  
lent, 40-48 hrs. per week, quiet  
clientele. Clean, neat in appear-  
ance. Experience desired but not  
necessary. Desire to work. Possi-  
bility of management position.  
Ph. 475-7398. 7



"I wouldn't think of selling my shop with a Standard Want Ad  
—if I could see a little better!"

## WANT ADS

FOR REAL DOLLAR SAVINGS  
Be sure and see us before you  
buy any new or used car. Palmer  
Motor Sales, Inc. Your Ford Deal-  
er for over 50 years. 21tf

## REFRIGERATION

**REPAIR MAN**

Excellent, permanent, full time op-  
portunity. Start at \$3 per hour,  
plus complete benefits, profit shar-  
ing and retirement. Immediate  
discount privileges. Apply in per-  
son.

**Montgomery-Ward**

Arborland Shopping Center 50tf

FOR TRACTORS and equipment.  
Also New Holland machinery.  
Sales and service. Cobb & Schreier,  
Stockbridge. Ph. Ulysses 1-4825. 49tf

## Septic Tanks

and Drain Fields

INSTALLED TO COUNTY CODE  
SPECIFICATIONS

Septic tanks from 300 gal. to 2,000  
gal. available for prompt instal-  
lation.

**HILLTOP PLUMBING**

BOB SHEARS

201 S. Main Phone: 479-8851 30tf

FREE ESTIMATES on bricklay-  
ing, fireplaces, basements and  
all types of cement work. Car-  
peting and roofing. Call 479-  
8418. 42tf

FOR SALE—Household furniture  
and appliances on Aug. 8, 9, 10 at  
5965 Sibley Rd., Chelsea. Phone  
475-8530. 7

THE "BIGGEST" event of Year.  
Chelsea Community Fair creep-  
ing up fast. Dates are August 28,  
29, 30, 31. Get involved. Be There.

RIP VAN WINKLE will be there—  
"Where?" 2 1/2 Chelsea Com-  
munity Fair, August 28-30-31. 7

FOR SALE—3-bedroom home at  
247 Washington St. \$21,200. Call  
475-8108 or 475-8516. 71tf

WANTED — Clean fill dirt. Call  
475-7681. 7

BE SEEN youth at Chelsea Com-  
munity Fair, August 28-30-31. 7

CASH FOR HOUSES, lots, farms  
or any property even if behind  
in payments. Art Daniels Realty,  
7030 Dexter-Pineknedy Rd. or 31000  
Ford Rd., 421-7880. 7

FOR SALE—Storm windows  
painted white, eight 24 1/2 by  
6 1/2. Cheap. Call 475-4801. 61tf

WANTED — Full-time waitress.  
Neat in appearance. Reserved.  
woman or girl. Quiet clientele,  
pay excellent. Phone 475-7398. 7

## - FOR SALE -

MODERN 4-BEDROOM Chelsea home. 2-car garage.  
In excellent condition.

CROOKED LAKE—2-acre lot, approximately 250 feet  
lake frontage. 2-bedroom modern brick home, fire-  
place, full basement, oil furnace, 2-car garage, 2-  
bedroom frame guest house, 5 boats. Immediate  
possession.

LARGE 2-ROOM CABIN, oil furnace, 1/2 bath, 1 1/2-  
acre lot. Price: \$7,000. Reasonable terms.

**NO RENTALS — SOLD OUT OF FARMS**

Have Buyers Waiting!

List your property with Miller—fast, efficient service.

**R. D. MILLER**

**REAL ESTATE BROKER**

Office: 15775 Cavanaugh Lake Road  
Post Office Box 381 Chelsea, Michigan  
Phone: GR 9-5892

## WANT ADS

Real Estate

Listings Wanted

**GREAT LAKES**

**REAL ESTATE**

Ph. 769-5630 37tf

PIANO TUNING, Chelsea and area.

Facilities for reconditioning and  
rebuilding. Used piano sales; re-  
conditioned grands and verticals.  
E. Eklund, 426-4429. 50tf

## PALMER'S

Fifth Annual

PICK-UP

SALE

A BRAND NEW

1968 FORD PICK-UP

WITH FULL FACTORY

EQUIPMENT FOR ONLY

\$1895.00

Only

\$100.00 Down

and \$59.00

per month

(Delivered, including tax)

**OVER 20**

**NEW PICK-UPS**

**IN STOCK**

**PALMER FORD**

Phone GR 5-3286

Open Mon., Wed. & Fri. till 9

FOR SALE—6-room house located  
1 mile south of Stockbridge at  
5897 M-52. Oak floors, paneling,  
full basement, natural gas, new  
gas furnace, deep well, small barn,  
and chicken coop. Three acres in-  
cluding garden land and fruit trees.  
Call anytime 851-4280. 7

APARTMENT FOR RENT—3  
rooms, 124 Grant, Chelsea. 6

WANTED—13-year-old boy, de-  
sires lawn mowing jobs. Call  
Tom, GR 5-5691. 6

## WANT ADS

CAR & TRUCK LEASING. For  
details see Lyle Christwell at  
Palmer Motor Sales, GR 5-3271. 49tf

## CLOGGED

**SEWER**

**Reynolds Sewer**

**Service**

Clean Sewers Without Dipping

Drains Cleaned Electrically

FREE ESTIMATES

2-YEAR GUARANTEE

Phone Ann Arbor NG 2-0277

Sewer Cleaning Is Our Business—  
Not a Side-Line 58tf

VACUUM CLEANERS—Electro-  
lux authorized sales and serv-  
ice. James C. O. Manchester,  
Ph. 428-2831 or 428-8221. 42tf

## Electronic Technicians

Must be high school graduate,  
completion of 2 years elec-  
tronics school or equivalent in  
military electronics training  
and experience required.

**Shipping Clerk**

and Stock Clerk



## YOUR INCOME TAX

**Q.** Note: This column of questions and answers on Federal tax matters is published by the Detroit District Office of the U. S. Internal Revenue Service. The column is published for the benefit of taxpayers. The column answers questions most frequently asked.

**Q.** Our daughter went to work last month. Can we claim her as a dependent as long as she is at home?

**A.** The general rule is that you can claim anyone as a dependent who has income of \$600 or more for the year. This rule would apply to your daughter if she earned \$600 or more for the year. If she earned less than \$600, you could not claim her as a dependent.

**Q.** I sold my house for about \$10,000 more than I paid for it. Will that \$10,000 be taxed as income?

**A.** Profits from the sale of a personal residence are generally not taxable. Under certain conditions, however, the tax on this gain may be postponed until a later year.

**Q.** I sold my house for about \$10,000 more than I paid for it. Will that \$10,000 be taxed as income?

**A.** Profits from the sale of a personal residence are generally not taxable. Under certain conditions, however, the tax on this gain may be postponed until a later year.

**Q.** I'm cleaning out my files and want to get rid of some of the old papers I've collected. What records and papers should I keep for tax purposes?

**A.** Records that support items on an income tax return should be kept until the statute of limitations expires for that return. Ordinarily this is 3 years from the date the return was due. Records on property acquisitions, capital improvements and the like should be kept much longer.

**Q.** For example, if you sell property you should have the records to establish what it cost when you acquired it and the cost of any improvements you made to it. This might mean you would need records dating back 20 years or more.

**Q.** My mother paid tax on her Social Security pension last year. Is there any way she can get this money back?

**A.** If your mother declared her Social Security benefits as taxable income she is entitled to a refund. This is one of the things we look for when we process returns and a good percentage of these errors are caught.

**Q.** Check your mother's return and, if she did pay taxes on her Social Security benefits, have her file a Form 1040 X, the form to amend your return. By using this form she need only enter the information that was incorrect and refigure the tax liability on that basis.

Copies of Form 1040 X and instructions are available at local IRS offices.

Telephone Your Club News To GR 5-3581.

## Michigan GO Guide

**NATIONAL MUSIC CAMP, INTERLOCHEN**  
**NATIONAL CHERRY FESTIVAL, OLIVET PARK**  
**OLD MISSION LIGHTHOUSE, YACHT HARBOR, MARINAS**  
**CHERRY COUNTY PLAYHOUSE**  
**NATIONAL STATE SHUFFLEBOARD CHAMPIONSHIPS**  
**TIN CAN TOURISTS CONVENTION**

**FOR INFORMATION, WRITE: MICHIGAN TOURIST ASSOCIATION, 107 PEARL STREET, N.W., GRAND RAPIDS, MICH. 49506**

**ATTRACTIVE REST STOPS ARE LOCATED AT INTERVALS ALONG MICHIGAN'S FREEWAY SYSTEM. TAKE A 15 MINUTE BREAK EVERY TWO HOURS TO WASH UP, RELAX AND EXERCISE.**

**Bring 'em back ALIVE!**

## Cultivated Blueberries

**PICK YOUR OWN—Open Fri., Sat. & Sun.**

from Dexter take Dexter-Pinckney Rd. 1/2 mile west to Grand Lake Rd. to Dancer Rd., left on Dancer Rd. to each Rd., right to first house right side. Take lane next to the house 1/4 mile. Bring your own drinking water.

**10804 BEACH ROAD**  
 1/4 Mile East of Four Mile Lake Ph. Vermont 7-2879

## STATE FAIR

Make Your Plans Now For Another Big Family Fun Affair

Free Exhibits: Thousands of Industrial and Educational Displays

**ALL ENTERTAINMENT FREE** in Coliseum, Grandstand and Music Shell

General Adm. Adults \$1.50, children 12 and under \$0.50

**AUG 23 THRU SEPT 2**  
**DETROIT**

## Sun-Proof 1-57 WHITE

Will not wash or chalk!

A white paint prepared especially for woodwork above brick or stone walls

**Sun-Proof House Paint**  
**Pittsburgh \$8.36 gal.**

## Chelsea Hardware

110 S. Main Street Phone GR 9-5311

**Pittsburgh Paints**

## Washington Report

by Congressman **MARVIN L. ESCH**

Congressional concern over our nation's highways was exhibited recently in the passage of the Federal Aid Highway Act of 1968. This new measure not only reauthorizes Congress to help the states meet ever-mounting traffic problems, but also faces up to the realities of several related concerns including highway safety, beautification and relocation.

The main thrust of the bill was to continue the development of our fine system of interstate highways begun under the Eisenhower Administration. Realistically, Congress extended the program beyond the old 1972 deadline for an indefinite period and made provisions for increasing construction costs and for expansion of the 41,000 mile system. Fortunately, many years ago Congress had the foresight to plan for the '60s. This bill represents a realization that we must go further to develop an interstate system adequate for the '70s.

Congress also realized that the \$1-billion it has authorized yearly for the 50-50 federal-state system of primary and secondary roads is not adequate and increased the amount, but only slightly—certainly not enough to meet the task of upgrading these roads. One only has to look at the condition of the primary and secondary roads in the Second Congressional District to gain an understanding of the size of this job. I have consistently spoken out for federal aid in this area and will continue my efforts on behalf of more adequate financing.

Highway safety efforts also received a boost in the new bill. There's no doubt that the severely limited amount of money available in this area has been a major restraining force on an all-out attack against the slaughter on our highways.

In recent testimony, the head of the American Farm Bureau Federation, said farm-price supports and Federal controls have depressed, not strengthened, farm prices and should be scaled down or ended.

**ON FARM PRICE AIDS.**  
 In recent testimony, the head of the American Farm Bureau Federation, said farm-price supports and Federal controls have depressed, not strengthened, farm prices and should be scaled down or ended.

**ON FARM PRICE AIDS.**  
 In recent testimony, the head of the American Farm Bureau Federation, said farm-price supports and Federal controls have depressed, not strengthened, farm prices and should be scaled down or ended.

**ON FARM PRICE AIDS.**  
 In recent testimony, the head of the American Farm Bureau Federation, said farm-price supports and Federal controls have depressed, not strengthened, farm prices and should be scaled down or ended.

**ON FARM PRICE AIDS.**  
 In recent testimony, the head of the American Farm Bureau Federation, said farm-price supports and Federal controls have depressed, not strengthened, farm prices and should be scaled down or ended.

**ON FARM PRICE AIDS.**  
 In recent testimony, the head of the American Farm Bureau Federation, said farm-price supports and Federal controls have depressed, not strengthened, farm prices and should be scaled down or ended.

**ON FARM PRICE AIDS.**  
 In recent testimony, the head of the American Farm Bureau Federation, said farm-price supports and Federal controls have depressed, not strengthened, farm prices and should be scaled down or ended.

**ON FARM PRICE AIDS.**  
 In recent testimony, the head of the American Farm Bureau Federation, said farm-price supports and Federal controls have depressed, not strengthened, farm prices and should be scaled down or ended.

**ON FARM PRICE AIDS.**  
 In recent testimony, the head of the American Farm Bureau Federation, said farm-price supports and Federal controls have depressed, not strengthened, farm prices and should be scaled down or ended.

## Former Chelsea Youth Completing Tool & Die Course

A former Chelsea High School student, Clinton P. Schultz, is among 106 candidates for diplomas and certificates at Jackson Community College's summer commencement Thursday night, Aug. 8.

Schultz, now living in Napoleon, was graduated from Chelsea High in 1961. He is to receive a certificate for completion of an apprenticeship program in tool and die making at J.C.C. The commencement will recognize 70 other persons receiving certificates for completion of programs in apprenticeship, practical nursing and secretarial studies, plus 35 who will receive an associate degree in arts, science, business, technology, or general studies.

The commencement will be held at 8 p.m. in the Cortland Building auditorium with Herbert W. Spindler, editor of the Jackson Citizen Patriot, as speaker.

**Fishing Violations Heard By Judges**  
 Harry Wallace, 46, of Ann Arbor paid \$13 fine and costs after pleading guilty before Ann Arbor Municipal Judge S. J. Elden to the charge of possessing trout without a trout stamp. He was discovered at Portage Lake.

Bodgen J. Miszkiewicz, 35, of Lansing paid a \$28 fine and costs for failing to have a fishing license in his possession. He pleaded guilty before Justice C. A. Rogers. He was found on Joslin Lake July 15.

**Schools Damaged**  
 (Continued from page one) girls have denied knowledge of the South school entrance.

On July 30, the Dwight E. Beach junior high school was entered and vandalized. Papers in the home economics classroom were rifled, and a doll used for classroom demonstrations was broken and found with a butcher knife stuck through it.

On the auditorium stage, police found paper towels crumpled and strewn about the floor. Hair, which appeared to be pubic hair, was found on the floor and appeared to have been cut with a large pair of scissors found lying on the floor.

**Parent Fined for Child Using Air Rifle Within Village Limits**  
 The mother of one youth who was found with three others shooting an air rifle within the village limits last week was fined \$10 Aug. 2 by Sylvan township justice C. A. Rogers.

The mother was issued a summons after Deputy B. G. Sibert answered a call to a dwelling on E. Middle St. where the boys were seen shooting at squirrels. Later, the boys were found hiding in the basement of a home.

**Parent Fined for Child Using Air Rifle Within Village Limits**  
 The mother of one youth who was found with three others shooting an air rifle within the village limits last week was fined \$10 Aug. 2 by Sylvan township justice C. A. Rogers.

The mother was issued a summons after Deputy B. G. Sibert answered a call to a dwelling on E. Middle St. where the boys were seen shooting at squirrels. Later, the boys were found hiding in the basement of a home.

**Parent Fined for Child Using Air Rifle Within Village Limits**  
 The mother of one youth who was found with three others shooting an air rifle within the village limits last week was fined \$10 Aug. 2 by Sylvan township justice C. A. Rogers.

The mother was issued a summons after Deputy B. G. Sibert answered a call to a dwelling on E. Middle St. where the boys were seen shooting at squirrels. Later, the boys were found hiding in the basement of a home.

**Parent Fined for Child Using Air Rifle Within Village Limits**  
 The mother of one youth who was found with three others shooting an air rifle within the village limits last week was fined \$10 Aug. 2 by Sylvan township justice C. A. Rogers.

The mother was issued a summons after Deputy B. G. Sibert answered a call to a dwelling on E. Middle St. where the boys were seen shooting at squirrels. Later, the boys were found hiding in the basement of a home.

**Parent Fined for Child Using Air Rifle Within Village Limits**  
 The mother of one youth who was found with three others shooting an air rifle within the village limits last week was fined \$10 Aug. 2 by Sylvan township justice C. A. Rogers.

The mother was issued a summons after Deputy B. G. Sibert answered a call to a dwelling on E. Middle St. where the boys were seen shooting at squirrels. Later, the boys were found hiding in the basement of a home.

**Parent Fined for Child Using Air Rifle Within Village Limits**  
 The mother of one youth who was found with three others shooting an air rifle within the village limits last week was fined \$10 Aug. 2 by Sylvan township justice C. A. Rogers.

The mother was issued a summons after Deputy B. G. Sibert answered a call to a dwelling on E. Middle St. where the boys were seen shooting at squirrels. Later, the boys were found hiding in the basement of a home.

## Townships Vote...

(Continued from page one)

Following is a tally of the votes cast in each township and the candidate nominated.

**SYLVAN**—In Precinct I, trustee candidate Republican George A. Merkel received 78 votes and Democrat Norman Eisenmann 68 votes. In Precinct II, Merkel received 89 votes and Eisenmann 75 votes. Both were, of course, nominated. Convention delegates in Precinct I are Democrats Mary C. Weber, 58 votes, Howard Walz, 57 votes, Janet Tobin, three votes, B. Hendricks, three votes, M. L. Hendricks, three votes, and Republican Howard Walz, 57 votes. All were nominated. Convention delegates in Precinct II are Democrats Louise Donaldson, 82 votes, Gwen LaGoe, 48 votes, James LaGoe, 60 votes, Keith Boylan, 7 votes, and Republican Kenneth Lindow, 57 votes. All were nominated.

**LYNDON**—Democrat Leslie Eisenbeiser was nominated for trustee, 36 votes. Doris Fuhrmann was nominated for clerk, 36 votes. Convention delegates are Republicans E. Jay Hopkins, three votes, and Wilma Kaiser, five votes; and Democrats Gerald Grohnert, 12 votes, and Warren Welton, six votes.

**LIMA**—Republican Walter D. Wolfgang was nominated for trustee, 107 votes. Convention delegates are Republicans Jay L. Bradbury, 112 votes, and Walter D. Ripper, 103 votes, and Democrat Wolfgang, 102 votes; and Democrats George Cantrell, 33 votes, Alex Mahay, 29 votes, and Wallace Wood, 43 votes.

**SHARON**—Nominated for the trustee post is Donald Irwin, 51 votes. Convention delegates are Democrat Allen A. Alber, three votes; and Republicans Herbert C. Jacob, 41 votes, and Eileen M. Ross, 48 votes.

**FREEDOM**—Trustee nominee is Republican Alvin Weidmayer, 99 votes. Delegates are Republicans Robert R. Kothe, 84 votes, Thomas S. Roberts, 64 votes, and Elvira M. Voegel, 130 votes; and Democrats Mary Munson, four votes, and George Munson, four votes.

**Personal Notes**  
 Mr. and Mrs. Robert A. Simpson entertained Thursday for the latter's friends, Mr. and Mrs. Jacob Raker of Ticonderoga, N. Y., formerly of Tacoma, Wash.

Mr. and Mrs. Herbert Musgrave of Freedom, Pa., were guests of Mr. and Mrs. Roy D. Miller Monday through Wednesday of last week.

Dr. and Mrs. Roger Hoffer and sons, Philip, Douglas and Steven of Lafayette, Ind., spent Friday and Saturday with their parents, Mr. and Mrs. Martin Steinbach.

Mr. and Mrs. Frederick Hopkins and their four children of Vernon, Conn., are spending two weeks with Mr. Hopkins' parents, Mr. and Mrs. M. W. McClure. Two of their children flew out a week early to visit their grandparents. From Chelsea, the Hopkins family will visit Mr. Hopkins' parents, Mr. and Mrs. N. W. Hopkins of Plymouth for two weeks.

Mr. and Mrs. Elton Musbach of 14900 Harvey Rd. has as house guest this week Mrs. Musbach's sister and husband, Mr. and Mrs. Alfred Johnson of Chandler, Minn. Also visiting were a nephew and his family, Mr. and Mrs. Gordon Johnson, Darlene, Diane and Russell, also of Chandler.

**Schools Damaged**  
 (Continued from page one) girls have denied knowledge of the South school entrance.

On July 30, the Dwight E. Beach junior high school was entered and vandalized. Papers in the home economics classroom were rifled, and a doll used for classroom demonstrations was broken and found with a butcher knife stuck through it.

On the auditorium stage, police found paper towels crumpled and strewn about the floor. Hair, which appeared to be pubic hair, was found on the floor and appeared to have been cut with a large pair of scissors found lying on the floor.

**Parent Fined for Child Using Air Rifle Within Village Limits**  
 The mother of one youth who was found with three others shooting an air rifle within the village limits last week was fined \$10 Aug. 2 by Sylvan township justice C. A. Rogers.

The mother was issued a summons after Deputy B. G. Sibert answered a call to a dwelling on E. Middle St. where the boys were seen shooting at squirrels. Later, the boys were found hiding in the basement of a home.

**Parent Fined for Child Using Air Rifle Within Village Limits**  
 The mother of one youth who was found with three others shooting an air rifle within the village limits last week was fined \$10 Aug. 2 by Sylvan township justice C. A. Rogers.

The mother was issued a summons after Deputy B. G. Sibert answered a call to a dwelling on E. Middle St. where the boys were seen shooting at squirrels. Later, the boys were found hiding in the basement of a home.

**Parent Fined for Child Using Air Rifle Within Village Limits**  
 The mother of one youth who was found with three others shooting an air rifle within the village limits last week was fined \$10 Aug. 2 by Sylvan township justice C. A. Rogers.

The mother was issued a summons after Deputy B. G. Sibert answered a call to a dwelling on E. Middle St. where the boys were seen shooting at squirrels. Later, the boys were found hiding in the basement of a home.

**Parent Fined for Child Using Air Rifle Within Village Limits**  
 The mother of one youth who was found with three others shooting an air rifle within the village limits last week was fined \$10 Aug. 2 by Sylvan township justice C. A. Rogers.

The mother was issued a summons after Deputy B. G. Sibert answered a call to a dwelling on E. Middle St. where the boys were seen shooting at squirrels. Later, the boys were found hiding in the basement of a home.

**Parent Fined for Child Using Air Rifle Within Village Limits**  
 The mother of one youth who was found with three others shooting an air rifle within the village limits last week was fined \$10 Aug. 2 by Sylvan township justice C. A. Rogers.

The mother was issued a summons after Deputy B. G. Sibert answered a call to a dwelling on E. Middle St. where the boys were seen shooting at squirrels. Later, the boys were found hiding in the basement of a home.

**Parent Fined for Child Using Air Rifle Within Village Limits**  
 The mother of one youth who was found with three others shooting an air rifle within the village limits last week was fined \$10 Aug. 2 by Sylvan township justice C. A. Rogers.

The mother was issued a summons after Deputy B. G. Sibert answered a call to a dwelling on E. Middle St. where the boys were seen shooting at squirrels. Later, the boys were found hiding in the basement of a home.

**Parent Fined for Child Using Air Rifle Within Village Limits**  
 The mother of one youth who was found with three others shooting an air rifle within the village limits last week was fined \$10 Aug. 2 by Sylvan township justice C. A. Rogers.

## Put New Life in Your Car...

Top grade gas, plus every extra service to give your car better performance, fast!

**COMPLETE ONE-STOP SERVICE**

## Bill Brown's Super Service

**GOOD GULF PRODUCTS**  
 295 S. MAIN ST. PHONE GR 9-1311

## Need A Room? A Standard Want Ad Can Help!

## TODAY'S THOUGHT

By LOUIS BURGHARDT

News of consequence alerts reporters whenever and wherever it occurs. When the written or spoken record of the news follows, reports sometimes appear incredible. But responsible reporters establish credibility through questions and interviews with eye witnesses in order to separate fact from fiction. If the following headlines appeared in today's paper, they might appear incredible—but, read on—

"MAN FEEDS 5000 PEOPLE FROM SMALL, SINGLE LUNCH BOX!" ... "MAN PARALYZED 38 YEARS; CURED INSTANTLY; NOW WALKS NORMALLY!" ... "MAN NAMED LAZARUS RESTORED TO LIFE SEVERAL DAYS AFTER DEATH!" ... "MAN MIRACULOUSLY CALMS ROARING STORM AT SEA; WALKS ON WATER!" ... "WEDDING GUEST MAKES WINE OUT OF WATER IN SPLIT SECOND!" ... "BLIND SINCE BIRTH; MAN NOW HAS EYESIGHT!" ... "OFFICIAL'S DYING SON QUICKLY RESTORED TO HEALTH!" ... "MIRACLE MAN CRUCIFIED; BURIED IN TOMB; REAPPEARS THREE DAYS LATER!" ...

These headlines ARE accurate! Different people in different places at different times were EYE WITNESSES! Is it any wonder the world has never heard or read news of more consequence? ... BURGHARDT FUNERAL HOME, 214 East Middle St., Chelsea, Mich. Phone GR 5-4141.

## -SPECIALS-

"JIFFY"

**Frosting Mix . . 3 boxes 29c**  
 1-LB. PKG. ECKRICH ALL-BEEF

**Hot Dogs . . . . . 59c**  
 KEYKO

**Margarine . . . . . 3 lbs. 69c**  
 18-OZ. JAR KRAFT

**Strawberry Jam . . . . . 45c**  
 100-COUNT

**Paper Plates . . . . . 59c**

## KUSTERER'S

**FOOD MARKET**  
 DIAL GR 9-3331 WE DELIVER

## low-cost AUTO FINANCING

Finance your new car here. Step in now—get our financing plan. See how you can save a substantial amount of money.

**5%** on Certificates of Deposit  
**4%** On Savings Passbook Accounts

## CHELSEA STATE BANK

Member Federal Deposit Insurance Corp. Member Federal Reserve System

## LUMBER and BUILDING SUPPLIES

For Those Who Want the Best in High Quality House Paint WE HAVE THE NEW

## MINNFLO-X.. \$7.95

Let Us Quote on Shingles for Your Re-Roofing Job Using Frey

## 235 - lb. SHINGLES

Underwriters Approved

## Finkbeiner Lumber Co.

Phone Chelsea GR 9-3881 On Old US-12 Just off S. Main St.

**MARTIN STEINBACH, Owner**

## KEEP FIT WITH MILK

MILK IS NATURE'S BEST FOOD

Drink to your good health with milk... vitamin-enriched to help the whole family keep fit and full of energy. Call for delivery.

## WEINBERG DAIRY

QUALITY PASTEURIZED DAIRY PRODUCTS  
 Old US-12 Phone GR 5-3771



## Community Calendar

Senior Citizens social party, Korner House, 7:30, Thursday, Aug. 8.

Senior Citizens birthday party, Korner House, 6:30, Thursday, Aug. 22, pot-luck dinner.

St. Mary's Bake Sale at K. of C. Hall, Saturday, Aug. 10, 10 a.m. to 1 p.m.

This is National Smile Week—Let's keep smiling all through Chelsea Community Fair week, August 28-29-30-31. adv. 7

Cards every Thursday afternoon at Korner House.

TOPS Club would like addresses of area servicemen stationed on ships or overseas and their approximate dates of return to the States in order to send packages and books. Phone GR 5-8352.

Inquiries regarding the Chelsea food bank may be directed to Harold Jones of Central Fibre Products in the event that Mrs. Dudley Holmes is unavailable.

American Legion and Auxiliary hospital equipment available by contacting either Eugene Martin, 475-5861 after 4 p.m. or Mrs. Duane Hall, 475-8130 after 5:30 p.m.

Agricultural Entrepreneurs Farm Bureau picnic at 12:30 p.m., Aug. 18 at the home of Mr. and Mrs. Leonard McCalla.

Sewing every Tuesday afternoon, at Korner House.

TOPS (Take Off Pounds Sensibly) meetings are held every Wednesday at 12:30 noon at 902 McKinley, Chelsea. Women or girls interested in joining this club may call GR 5-8352 or 475-8864.

Salem Grove WSCS ladies will sponsor a bake sale, August 16 at Sylvan Town Hall, 2 p.m. to 5 p.m. adv. 8

VFW Auxiliary to Post 4077, Monday, Aug. 12, 8 p.m. sharp, Rebecca Hall.

Wednesday Night 6:30 Bowling League, Thursday, Aug. 8, 7:30 p.m., Chelsea Fairgrounds, Little Red Schoolhouse.

VFW Auxiliary business meeting, Monday, Aug. 13, 8 p.m., Rebecca Hall.

## Entry Forms Available for Fair Queens

All girls entering this year's contest for 1968 Chelsea Community Fair queen should report to Mrs. Roy Greenleaf at 1250 Freer Rd., as soon as possible. Mrs. Greenleaf, chairman of the Jaycee Auxiliary queen contest committee, announced this week.

Candidates must go to Mrs. Greenleaf's home to pick up entry forms.

A new rule this year is that candidates must present a talent.

"This year the committee and myself wish to try something different so that each of the girls will be introduced on stage more than the usual three minutes Saturday evening," explained Mrs. Greenleaf.

"This should not only be fun but more challenging," she added.

Again this year, contestants must ride a float in the Saturday afternoon parade. They must also appear on stage at the fair-arena on Thursday, Friday and Saturday nights ending on Saturday with the crowning of the 1968-69 queen.

Last year's queen, Diane Stoffer, will present the honors to this year's fair queen.

Mrs. Greenleaf said 12 girls competed in last year's contest and it is hoped even more will apply this year. The runner-up receives a prize and the queen receives many prizes given by the Chelsea fair board.

## BIRTHS

A daughter, Jill Renee, Aug. 5, to Mr. and Mrs. Jon D. Schaffner.

A daughter, Angela Marie, Aug. 3, to Mr. and Mrs. David Brand, 3303 Sylvan Rd. Grandparents are Mr. and Mrs. Donald Robbins of 17670 Heim Rd., and Mr. and Mrs. Floyd Brand of 3145 Sylvan Rd.

A daughter, Shelley Lynn, July 24, to Mr. and Mrs. Philip R. Boham, 316 Garfield St. The child's grandparents are Mr. and Mrs. Donald Boham of Main St. and Mr. and Mrs. Scott Freeman of North Lake.

A daughter, Laura Ann, Aug. 3, to Mr. and Mrs. Wayne Abdon, 604 Grant St. Grandparents are Mr. and Mrs. Don Parsons, 223 Lincoln St., and Mr. and Mrs. Russell Abdon, 206 Wilkinson St.

Subscribe Today to The Standard!



RETIREE—Ralph Sundberg, wearing the hat, Dana, at his retirement farewell. Looking on are receives a coat from J. L. Hess, left, Dana plant manager and a white Bible from Elwood McGlothlin, right, UAW bargaining committee chairman at far right, John A. Shaner, Jr., personnel director.

## Sundberg Leaves Dana To Travel

After 16 years with Dana Corp., Ralph Sundberg received his "walking papers" July 31. Sundberg was not fired, rather he retired to a life of doing "nothing in particular," he says.

## Vandals Knock Down Nearly 50 Mailboxes

We need the help of alert men, women or small fry in the area between the villages of Dexter and Chelsea.

Think back or question the neighbors a little bit. We are very sure that our readers will come up with the necessary information to help apprehend the culprits who destroyed nearly 50 mailboxes during the morning last Friday, Aug. 2.

Deputies of the Washtenaw County Sheriff's Department indicate that the vandals must have driven a heavy truck or other vehicle along the side of the roads in that area, ripping out the mailboxes as they progressed.

Mailboxes along Dexter-Chelsea Rd., Lima Center Rd., Old US-12, Kalmbach Rd., Cavanaugh Lake Rd., and Pierce Rd. were reported destroyed, and authorities surmise that many more were probably unrooted, but have not as yet been reported as such.

Please notify Washtenaw County Sheriff's Department at 662-2504 if you have any information, concerning the destroyed mailboxes.

With such a wide area of operation, some of The Dexter Leader and The Chelsea Standard readers must surely have observed the culprits—what color was the vehicle?—what kind was the vehicle?—how many people in it?—and anything else? We solicit your help.

You can travel thousands of miles without finding better people than those who live next door.

## Disaster Area Declared for Flood Damage

Areas of Washtenaw county hit by flooding waters the week of June 23 have been declared disaster areas by the Small Business Administration, an independent federal agency, announced Congressman Marvin Esch Monday.

This means that business, rental property and private home owners in this area will now be eligible to receive emergency loans from the SBA.

At the request of Esch, the SBA conducted an investigation of the Washtenaw county area to determine the extent of the flooding damage.

Esch received a call Aug. 5 from SBA office in Washington indicating that this area is designated a disaster area for the SBA's purposes.

In order to find out about the emergency loans, residents may contact the Detroit Small Business Administration office located at 1249 Washington Blvd., phone 313-226-7240.

Minutes of the July 15 meeting were approved as read. The treasurer's report was approved as presented.

Motion by Taylor, supported by Koenn, to pay general fund bills of \$3,966.73. All ayes.

Motion by Powers, supported by Hopkins, to accept the resignation of Mrs. Ellen Gilles as the high school counselor if and when a suitable substitute can be obtained. All ayes.

Motion by Powers, supported by Koenn, to authorize the business manager to apply for a Title 1 grant for 1968-69. Ayes: Lancaster Powers, Lewis, Koenn, Hopkins and Irwin. Nays: Taylor. (Note: A Title 1 grant is part of the federal poverty programs to provide funds for school systems for remedial reading and library aid materials.)

Business Manager Mills reported that new boilers for the Dwight E. Beach junior high school have been ordered and the contractor will start removal of the old boilers this week.

Meeting adjourned at 10 p.m.

Be sure about your auto protection. Better get

**Auto-Owners Auto Insurance**  
See your A-O Man  
**A. D. MAYER AGENCY, INC.**  
"Your Protection Is Our Business"  
115 Park St., Chelsea  
PHONE 479-5061  
**Auto-Owners Insurance**  
Life • Casualty • Fire • Auto

## DEATHS

### James D. Nutt

Operated Chelsea Store From 1946 Until 1950

James D. Nutt, 65, 2002 Geddes Ave., Ann Arbor, died suddenly Monday, Aug. 5, in St. Joseph Mercy Hospital.

He was born Aug. 4, 1903, in Battle Creek, the son of Harry D. and Georgia Forrest Nutt. Mr. Nutt lived in Chelsea from 1946 to 1950 and ran the Goodyear store for part of that time. He was a treasurer of the East Ann Arbor Kiwanis Club and was a member of the United Presbyterian church of Ann Arbor.

Surviving Mr. Nutt are his widow, Lily; one son, James D. Nutt, III, of Ypsilanti; one daughter, Mrs. Virginia Dillard of Ypsilanti; and a sister, Mrs. N. S. (Betty) Potter of Centerville, Long Island, N. Y. Four grandchildren also survive.

Funeral services will be held Thursday (today) Aug. 8, at 1:30 p.m. from the Staffan Funeral Home, Ann Arbor. The Rev. John R. Wagner of the United Presbyterian church will officiate. Burial will take place in Washtenaw Memorial Park.

### Mrs. Walter Weston, Pinckney Area Resident Dies Friday at Home

Mary Catherine Weston, 55, of 11093 Colony Dr., Pinckney, died suddenly Aug. 2 at her home.

She was born July 21, 1913, at Parshaville, Mich., a daughter of James and Mary Bennett Callaghan. She married Walter W. Weston, who survives.

Also surviving are five sons, Walter W., Jr., of Indianapolis, Ind., Thomas of Pinckney, Daniel of Westland, Gary of Inkster and Timothy of Brighton; three daughters, Mrs. Donald (Joan) DeFranceschi of Garden City, Mrs. George (Ann) VanderVennet of Livonia and Mrs. Gene (Patricia) Hauptrecht of Delta, O.; five brothers, Russell Callaghan of Parshaville, Ralph Callaghan of Milford, Vincent Callaghan of Flint, and Roy and Joseph Callaghan of Fenton; one sister, Mrs. Mildred Soper of Fenton; and 27 grandchildren.

Funeral services were held Monday, Aug. 10, 10 a.m., at St. Mary's church, Pinckney. The Rev. Fr. Hugh F. Czekun officiated. Burial was in St. Mary's Cemetery, Pinckney. A rosary was said Sunday, Aug. 9, at 8 p.m. at the Staffan Funeral Home, Chelsea.

### Hub Cap Stolen

A hub cap was stolen from a car parked in the lot of the Chelsea Milling Co. July 30. The car belonged to an employee of the company, Marela Minneci, 4980 S. Clinton, Stockbridge. The hub cap was valued at \$15.

### Howard Anderson

Dies Suddenly Saturday At Home in Florida

Howard Anderson, 74, formerly of Sugar Loaf Lake, died suddenly Aug. 3 at his Florida home.

Born Jan. 12, 1894, he was a son of Edwin and Etta Anderson. He married Emma Collins, who survives.

Mr. Anderson was retired from Cadillac Motor Co. He was a life member of Friendship Lodge, and he was also a member of the Chelsea Rod and Gun Club and the Congregational church here before he moved to Ft. Lauderdale, Fla., in January. He was also an Elk.

Other survivors include a daughter, Mrs. John (Carol) Canavan of Livonia; a son, John E. of Dearborn; a brother, Paul of Sarasota, Fla.; and seven grandchildren.

Funeral services were held Wednesday, Aug. 7, from the Griffin Funeral Home, 17600 Plymouth Rd., Detroit. The Rev. Philip Rustin of Ann Arbor officiated. Burial followed at Aclia Park Cemetery, Detroit.

### Seven Bikes Confiscated By Police for Riding at Night Without Lights

Seven bikes were confiscated by the Chelsea Police Department during recent weeks when they were seen at night without lights. Chief George Meranuck advises all bike owners that a village ordinance requires the presence of lights on bikes.

Meranuck also stressed that possessing a loaded BB gun is unlawful within the village limits. Two loaded BB guns were recently confiscated and parents paid fines for allowing their children to carry them in the village limits.

Some people gossip several hours a day and others all the time.

## Two Bruised in Crash on M-52

A car driven by Robert Minnie Dennis, 1955 McKinley St., Ypsilanti, left the right shoulder of the road on M-52 Aug. 4, traveled 54 feet and skidded into the oncoming lane hitting another car with the right rear end of his car.

Driving the second car was Pamela Diane Pennington, 205 N. Harvey Rd., Plymouth. With her three-year-old sister, Pennington and Pamela were bruised in the crash. No violation was issued by the Washtenaw County Sheriff's Department.

### RISE IN MAIL FRAUDS

Postmaster General W. Mark Watson reports an increase in the number of mail fraud complaints from consumers and other businesses through the mail is 10 percent higher than the same period last year.

## SAFE DRIVERS SAVE

with Community Service Auto Insurance

Control my today!

**DAVID D. ROWE**  
157 E. Summit St., Chelsea  
PHONE 475-8065

## FARM BUREAU INSURANCE

Companies of Michigan

## And Away You Go . . .

for miles of smooth motoring after you fill up with our PURE gas and oils. One stop here keeps you going safely, surely. Try our speedy, friendly, competent service. You'll come back again and again!

## PURE OIL PRODUCTS

## JIM'S PURE SERVICE

Tires — Batteries — Tune-Ups — Brake Service — Wheel Alignment  
PHONE 479-3541 CHELSEA, MICH.

**YES**  
WE ARE MAKING  
LONG TERM FARM  
REAL ESTATE  
LOANS

SEE US

**Federal LAND BANK Association**

Ph. 665-6139 2221 Jackson Ave.  
Ann Arbor, Mich. 48106  
P. O. Box 1006

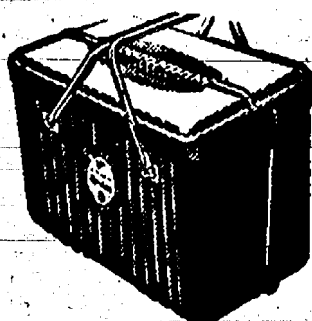
**Gambles**  
The Friendly Store



**CORONADO 'Thinwall 15' Chest Freezer Valuel**

**NO MONEY DOWN \$2.25 Per Week Payable Monthly \$189.95**

It's only 44 inches long (a whole foot shorter than last year's model)—yet holds an amazing 11 pounds more! Space-saving thinwall design does it. Keeps over 1/2 ton of fresh frozen foods so convenient for you. Removable basket and 2 heavy duty dividers make food selection easy. Defrost drain, light, lock. AHAM net 15.45 cu. ft.



**Insulated, Leakproof PICNIC CHEST**

**30-Qt. Chest \$5.99**  
With Gallon Jug. Reg. \$7.95.

**Long-Life "D" Size Battery. 2 for 29¢**  
Reg. 2 for 39¢.

**Transistor Battery, 10¢**  
9-volt. Reg. 19¢.

**Automatic Trans. 39¢**  
Fluid. Reg. 45¢.



**ALUMINUM STEPLADDER**

Compare at \$6.49 **\$2.99**

**TRADE-Pay Less!! At Gambles**

## CHELSEA LUMBER'S QUALITY — DESIGN GARAGES

With Free Plans,  
Detailed "Do It Yourself" Instructions



**BIG CAR SIZE — 12' x 22'**

Everything To Build It on Your Slab!

Now Chelsea Lumber, as a member of one of the largest building-materials buying groups in the country, offers all the materials you need to build this beautiful garage at national savings! This price includes 10" pine heavy-duty bevel siding, windows, Crawford overhead door, 1 walk-in door, plus much more!

**\$407**

Complete Materials, Plans and Instructions Delivered - Cash Basis

(20 x 22 2-CAR PACKAGE — \$647)

DIAL OR 5-3391

**CHELSEA LUMBER CO.**



**in 52**  
in Michigan  
St. Y  
shoulder  
4, travel  
to the co  
another  
and of  
was Pan  
205 M  
With the  
other an  
Pennings  
In the  
Sheriff D  
INS  
W. Mar  
case in  
complain  
hers do  
mail is  
the sam  
ERS  
Service  
Auto  
rance  
and my  
yl 3  
OWE  
Chel  
1065  
U  
Fe  
safely  
y, com  
k again  
ICE  
alignm  
ICH.

**AGRICULTURE**  
**Action** .....

by M.J. Wool

**Self-Defeating Failure**

The U.S. House of Representatives will soon be asked to vote on a one-year extension of the Cultural Act of 1965. Any extension will be vigorously opposed by a substantial group of Congressmen, among them Philip Ruppe of the 11th District.

Ruppe is outspoken in his opposition to an extension of the act which he terms an out-right self-defeating. Here is his reasoning:

The program costs the taxpayer about \$3.5 billion per year. It has allowed large-scale operators to receive economic bonuses, while small farmers are left in a cost-price squeeze. Last year, for example, the Grand Plantation in Mississippi received a \$157,930 windfall from the taxpayers and the big operators did equally well.

It is the Congressman's opinion that the feed-grain program in the act is a prime example of inefficiency. "Part of its billion annual cost goes to land out of production, the rest gives farmers an incentive to boost output on existing acres. This is self-defeating."

Look at the facts," Ruppe says, "the farmer parity ratio about the same level now as it was in the depression. This year, realized net farm income, including government payments, dropped \$2 billion, 10 percent in 1957. Small farmers caught in a terrific squeeze, costs rising sharply while prices stay down. The debt is up 90 percent in the last seven years."

It is no wonder that most of the small farmers I have talked to are in opposition to the extension of the act," he says. He feels that an extension would amount to an invasion of confidence in the program—where no confidence is deserved. He questions the need for an extension of the existing act covers all harvested prior to Jan. 1, 1968. This would allow Congress a year to come up with something better.

Certainly we can come up with a sound, responsible program of real benefit to the farmer, changing the basic concept of present "supply-management," I feel we can pull the farmer out from under the severities of the present program," Congressman Ruppe says.

**Bite Reported**

A six-year-old boy, who was bitten by a dog chained at 515 Union St., Aug. 5, was bitten on the right arm and right leg. Stitches were required to close arm wound.

The owner of the dog, Clara, was ordered by police to keep the dog for 10 days. Police report this was the second bite by the dog while dog was chained up.

**YOU CAN GET YOUR BEST BUY IN CENTRAL AIR CONDITIONING RIGHT NOW!**

If you've been planning to air condition your home, you couldn't pick a better time than right now. Short postpones action until a hot, humid, summer day when the need strikes you—and every body else.

If you already have a good warm air furnace, adequate duct work and proper house wiring, you probably already have half of a good heat/cooling system.

**John W. Steele**  
Heating and Air Conditioning  
PHONE GR 9-4451  
521 Gayfield St.

# THE SUPERMARKET THAT'S JUST A LITTLE BIT BETTER



THE KNOW HOW OF INTELLIGENT MEAT BUYING IS REALLY THE 'KNOW WHERE'

Our customers have learned to depend on the outstanding quality of Stop & Shop meats—unfailing satisfaction with every cut they purchase. The finest quality, together with the experienced expertise of our meat cutting experts, makes an unbeatable combination!

Prices Effective Wednesday, August 7 through Tuesday, August 13, 1968

## STEAKS



"Triple R Farms" U.S.D.A. Choice

**SIRLOIN STEAK** \$1.19 lb.

"Triple R Farms" U.S.D.A. Choice  
**Round Steak** . . . . . 99¢ lb. Ideal for Swissing

"Triple R Farms" U.S.D.A. Choice  
**Rib Steak** . . . . . \$1.09 lb.

"Triple R Farms" U.S.D.A. Choice  
**Chuck Steak** . . . . . 69¢ lb.

"Triple R Farms" Michigan Grade 1  
**SKINLESS WIENERS** . 49¢ lb. **SLICED BOLOGNA** . 49¢ lb.

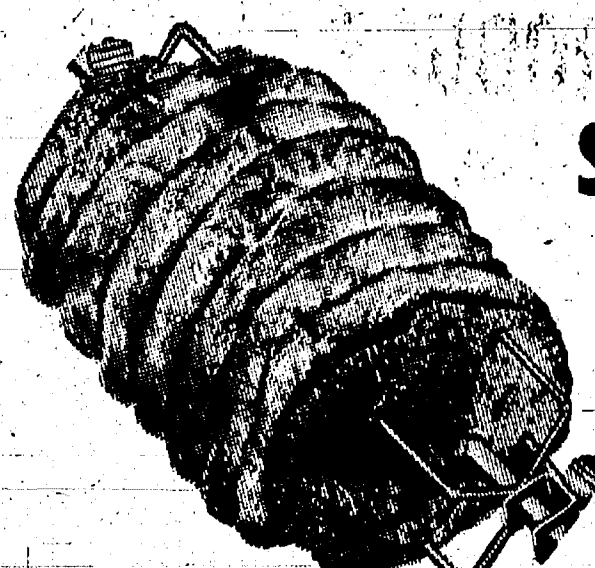
Tender, Delicious  
**Cube Steak** . . . . . \$1.09 lb.

Spencer's Hickory Smoked  
**Sliced Bacon** . . . . . 69¢ lb. 1-Lb. Layer

Lean, Tender, Boneless and Cubed  
**Pork Cutlets** . . . . . 79¢ lb.

Stop & Shop's Fresh, Lean, American Beef  
**Hamburger** . . . . . 59¢ lb. 3-Lb. Units or More

"Triple R Farms" U.S.D.A. Choice



**RUMP or SIRLOIN TIP ROAST**  
\$1.09 lb.

**FARM FRESH PRODUCE**

Southern Grown  
**Peaches** . . 2 Lbs. 29¢  
U. S. Fancy  
**Bartlett Pears** . . . . . 29¢ Lb.  
U. S. No. 1 Michigan  
**Potatoes** . . . . . 49¢ 10-Lb. Bag

CARNIVAL  
**Ice Cream** . . . . . 59¢ Half Gallon

MCDONALD'S  
**Popsicles** . . . . . 19¢ Package of 6

CHASE & SANBORN  
**Coffee** . . . . . 67¢ 1-Lb. Can

CAMPBELL'S  
**Tomato Soup** . . . . . 11¢ 10.5-Oz. Can

Camelot  
**Saltine Crackers** . . . . . 19¢ 1-Lb. Box

Hart Brand  
**Tomato Juice** . . . . . 24¢ 1-Qt., 14-Oz. Can

Pure Vegetable Shortening  
**Crisco** . . . . . 69¢ 3-Lb. Can

Doumak  
**Marshmallows** . . . . . 19¢ 1-Lb. Pkg.

Our Favorite  
**Sweet Peas** . . . . . 15¢ 1-Lb. Can

Shamrock U. S. Grade A Medium  
**Eggs** . . . . . 39¢ Doz.

Duncan Hines - Assorted Deluxe  
**Cake Mixes** . 3 1-Lb., 2 1/2-Oz. Boxes \$1

Assorted Colors  
**Northern Tissue** 3 4-Roll Pkg. \$1.00

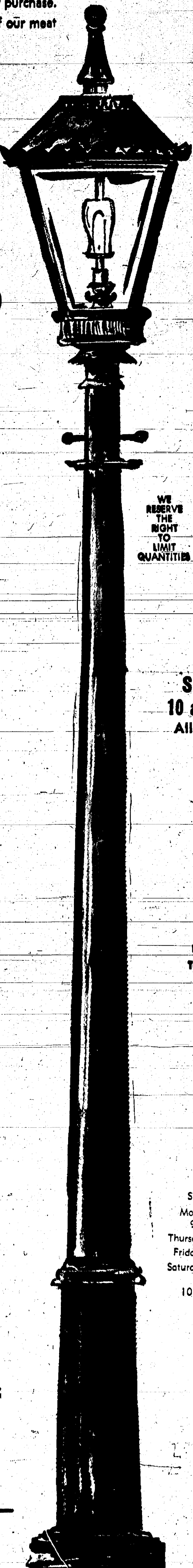
Borden's 5 Delicious Flavors  
**Yogurt** . . . . . 22¢ 8-Oz. Ctn.

McDonald's  
**Skimmed Milk** . . . . . 29¢ Half Gallon

McDonald's, Fresh, Delicious  
**Orange Juice** . . . . . 49¢ Half Gallon

McDonald's Fresh, Delicious  
**Fruit Drink** . 4 Half Gallons \$1

SAVE 20% OR MORE ON STOP & SHOP'S HEALTH & BEAUTY AIDS



WE RESERVE THE RIGHT TO LIMIT QUANTITIES

**OPEN SUNDAY**  
10 a.m. - 6 p.m.  
All Sale Prices Effective Sundays

Sorry, No Sales To Dealers

**STORE HOURS:**  
Mon., Tues., Wed., 9 a.m.-6 p.m.  
Thursday, 9 a.m.-9 p.m.  
Friday, 9 a.m.-9 p.m.  
Saturday, 8 a.m.-9 p.m.  
Sunday 10 a.m. to 6 p.m.



## CROSSWORD PUZZLE

**By Lee Switz**

**SUPPLY**  
PHONE GR 5-5511

son. No obligation.

ed., Fri.:  
on, 2 to 8 p.m.  
e a.m. to Noon.

**ION**  
**ADJUSTING**

n low-back  
accidents  
liver, gall

igation.



## + Services in Our Churches +

**ST. BARNABAS EPISCOPAL CHURCH**  
20500 Old US-12  
Rev. William D. Laskau, Vicar  
Sunday, Aug. 11—  
8:00 a.m.—Morning prayer.

**ST. MARY'S CATHOLIC CHURCH**  
Rev. Fr. Francis Wahowiak  
Sunday, Aug. 11—  
8:00 a.m.—Confessions.  
9:00-9:30 p.m.—Confessions.

**THE EVANGELICAL AND REFORMED CHURCH**  
(United Church of Christ)  
Freedom Township  
Rev. T. W. Menzel, Pastor  
Sunday, Aug. 11—  
9:00 a.m.—Worship and Sunday school.

**CHELSEA BAPTIST CHURCH**  
Rev. Elmer S. Steenson, Pastor  
Sunday, Aug. 11—  
9:00 a.m.—Sunday school.  
10:00 a.m.—Worship service.  
11:00 a.m.—Worship service.  
12:00 p.m.—Evangelistic service.  
Every Wednesday—  
7:00 p.m.—Bible study.

**FIRST UNITED METHODIST CHURCH**  
Rev. Robert Worgess, Pastor  
Sunday, Aug. 11—  
9:00 a.m.—Church school, junior and senior high.  
10:00 a.m.—Church school, nursery through 6th grade.  
11:00 a.m.—Worship service.

**ST. THOMAS ANGELOL LUTHERAN**  
Freedom Township  
Rev. Daniel L. Mattson, Pastor  
Sunday, Aug. 11—  
9:00 a.m.—Worship service.  
10:00 a.m.—Sunday school.

**IMMANUEL BIBLE CHURCH**  
The Rev. Frank C. Frinkle, Pastor  
145 E. Summit St.  
Sunday, Aug. 11—  
9:45 a.m.—Sunday school, nursery provided.  
11:00 a.m.—Morning worship, nursery provided.  
7:00 p.m.—Evening service.  
Every Wednesday—  
7:30 p.m.—Family Hour and Junior choir.

**FIRST UNITED PRESBYTERIAN CHURCH**  
Unadilla  
The Rev. T. H. Liang  
Sunday, Aug. 11—  
9:00 a.m.—Sunday school.  
10:15 a.m.—Worship service.  
Every Tuesday—  
8:00 p.m.—Choir practice.

**FIRST ASSEMBLY OF GOD CHURCH**  
14900 Old US-12  
The Rev. Stephen J. Vaudrey, Pastor  
Sunday, Aug. 11—  
10:00 a.m.—Sunday school.  
11:00 a.m.—Worship service.  
7:00 p.m.—Evangelistic service.  
Every Wednesday—  
7:00 p.m.—Bible study.

**NORTH SHARON COMMUNITY BIBLE CHURCH**  
Sylvan and Washburn Rds.  
The Rev. Paul Collins  
Sunday, Aug. 11—  
10:00 a.m.—Sunday school.  
11:00 a.m.—Worship service.  
8:30 p.m.—Young People's service.

**CONGREGATIONAL CHURCH**  
(United Church of Christ)  
The Rev. Daniel Keim, Pastor  
Sunday, Aug. 11—  
10:00 a.m.—Service. Guest speaker.

**ST. PAUL UNITED CHURCH OF CHRIST**  
The Rev. Warner Siebert, Pastor  
Sunday, Aug. 11—  
9:00 a.m.—Church service.  
10:10 a.m.—Church school.

**METHODIST HOME CHAPEL**  
The Rev. John Fall, Administrator  
The Rev. Wm. Johnson, Chaplain  
Sunday, Aug. 11—  
8:45 a.m.—Worship service.

**ST. JACOB EVANGELICAL LUTHERAN CHURCH**  
12801 Reithmiller Rd., Grand Lake  
The Rev. Andrew Bloom, Pastor  
Sunday, Aug. 11—  
8:45 a.m.—Worship service.  
9:45 a.m.—Sunday school.  
10:45 a.m.—Worship service.

**FIRST CHURCH OF CHRIST, SCIENTIST**  
1883 Washtenaw Ave., Ann Arbor  
Sunday, Aug. 11—  
9:30 a.m.—Sunday school.  
10:30 a.m.—Morning service.  
"Spirit" is the subject of the Lesson-Sermon.

## Salmon Derby Starts Aug. 17 At Manistee

Michigan's first large-scale Salmon Derby, a joint venture of the Manistee County Board of Commerce and five commercial sponsors, has been set for Aug. 17-18, according to an announcement by Tom Lewis, manager of the Board.

"We have a list of prizes, totaling more than \$1,000 in value, which will be awarded to pre-registered fishermen reporting in with the 10 biggest fish caught during the two days of the Salmon Derby," Lewis said.

"We're in much better position to handle the thousands of fishermen coming to Manistee this year than we were last year," Lewis said, "although we want to stress the fact that virtually all sleeping accommodations in the area already have been booked in advance, and many fishermen will have to commute on a day-by-day basis from home or stay in places as much as 50-75 miles away."

"However, we have more launching facilities available this year, and restaurants will be better prepared to serve the thousands of hungry fishermen," Lewis said.

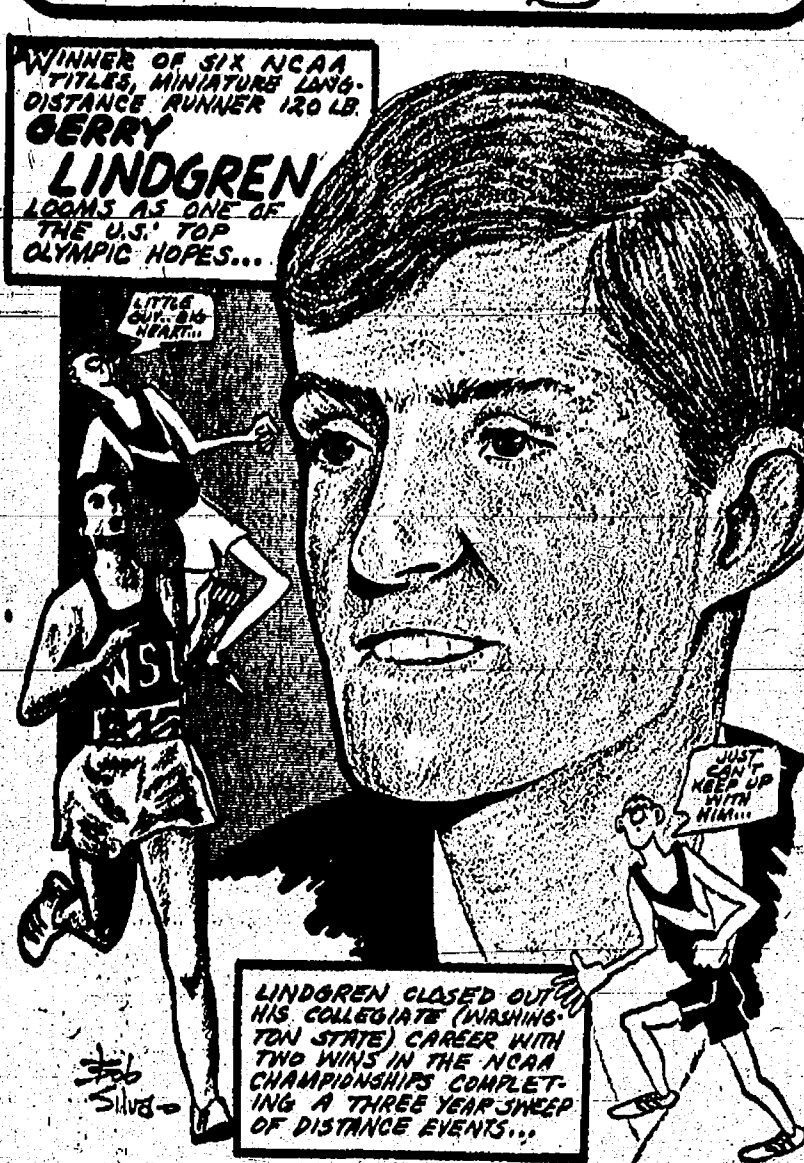
Rules of the Salmon Derby state that a fisherman must pre-register and pay \$50 cents in Manistee, to get into the tournament, must get his catch through legal means any time from Aug. 17 and until 1:30 p.m. Aug. 18, and must be willing to have his entry opened and examined for foreign objects. Winners will be announced Aug. 21.

Sponsors of the Salmon Derby, which is patterned after a similar Derby on the west coast, include McDonald Dairy, Leonard Refineries, McCulloch Corp., Hastings Mutual Insurance Co., and J. & M. Sales Co.

**AIR FORCE SHELTERS**  
The Air Force has ordered reconstruction of shelters for its aircraft in South Vietnam against Viet Cong rocket and mortar attacks. At present, aircraft are in roofless enclosures made from earth-filled steel walls five feet wide and 12 feet high.

**LEAD GUNS**  
President Johnson has asked Congress for legislation that would require registration of every gun in the nation and the licensing of every person entrusted with the use of one.

## SPORTS CORNER



LINDGREN CLOSED OUT HIS COLLEGIATE (WASHINGTON STATE) CAREER WITH TWO WINS IN THE NCAA CHAMPIONSHIP, COMPLETING A THREE YEAR STREAK OF DISTANCE EVENTS...

### Inverness Golf League

	Pts.
Chelsea Lanes	48 1/2
Chelsea Milling	45 1/2
Seitz's Tavern No. 2	43
Eisenbiser-Sod	42 1/2
The Pub	42
Kolander-Machinery	39 1/2
Dana Corp.	38
Chelsea Drugs	37 1/2
L.P.S.	32
Meabon's	30
Dancer's	30
Wolverine Bar No. 2	29 1/2
Wolverine Bar No. 1	28
Chelsea Lumber	27 1/2
Schumm's	24 1/2
Seitz's Tavern No. 1	22

The trouble with many individuals is that they worry too much about the sins of mankind and too little about their own.

## from HISTORY'S SCRAPBOOK

DATES AND EVENTS FROM YESTERYEARS

The Social Security Act was signed, August 9, 1935.  
Atomic bombs destroyed Nagasaki, August 9, 1945.  
Alexander Graham Bell used telephone to span a distance of 8 miles between Brantford and Paris, Ontario, August 10, 1876.  
Animated motion picture cartoons were introduced, August 11, 1914.  
Hawaii was annexed to the United States, August 12, 1898.  
President Roosevelt nominated Hugo Black to the U.S. Supreme Court, August 12, 1937.  
Mexico capitulated to Cortez, August 13, 1521. The English government separated New Hampshire from Massachusetts, August 13, 1692.  
General Nathaniel Lyon, Eastford, Connecticut, was killed at the battle of Wilson's Creek, August 14, 1861, the first Union general to fall in the civil war.  
The Panama Canal was officially opened, August 15, 1914.



**Having Fun Lately? Bowling Is a Ball!**

Put some fun in your life... Bowl for laughter and health at our modern, well-equipped lanes with rarely a wait. Bring the gang down!

**CHELSEA LANES**  
1180 M-52 Phone GR 5-8141

Need A Room? A Standard Want Ad Can Help!

## Free, But Not Cheap!

In a county treasurer's office hung a sign: "Pay your taxes with a smile!" I tried it, but it didn't work. THEY WANTED my smile. In this life most things must be purchased and paid for with toil and sweat. Salvation, however—the greatest thing of all—FREE! Paul says we are FREELY justified by His grace. Romans 3:24. Free things, when offered by men, are usually expensive or worthless articles. But salvation, although free, is neither cheap nor worthless. The reason it is free is because that is the only way we could ever get it. If it had to be purchased, the price would be infinitely beyond our ability to pay. Yes, salvation is FREE but not CHEAP. In fact, it is the most expensive gift in the universe, for it was purchased by Christ at the price of His own life. You see, the purchase price of our redemption included providing perfect satisfaction as far as the law of God was concerned. This law demanded the sinner's punishment and separation from God for an endless eternity. This could not be met by finite man. It would take him an eternity in Hell, and still he would never be able to finish paying a penalty. But our Lord Jesus, because He was man, He could pay it in a moment of time. Therefore, when He cried, "It is finished," He canceled our debt and God gave a "full receipt" by giving Him from the grave. Now "whoever will" may come and take of the water of life FREELY." (Revelation 22:17).

Ah, no, salvation is not cheap, but it is free! The most expensive thing a man can do is to refuse God's free gift—then he can pay the price himself throughout all eternity, for "the wages of sin is death"—eternal death! Surely only a fool would turn down the gift of a King—purchased at the expense of His own life. Romans 6:23.

**Immanuel Bible Church**  
Bible-Believing Church with a Christ-Exalting Ministry.  
Rev. Frank C. Frinkle, Pastor. Phone 475-8936.

## SUNDAY'S SERMON

**FAITH**  
If we have faith in Christ, then we have faith in God and in the purpose of our own existence upon earth. Faith is strength that chase away doubt. Faith is strength that builds courage, that nourishes hope. If we could not believe that God will not forsake us, then the trying times of our lives would be much more difficult to bear. Faith is something we can live by. If we have faith in ourselves; in our fellow man, we will be able to more readily understand the real purpose of our life and our existence. Whatever life brings your way, always cling to faith. Believe that God will give you the strength you need. Believe that tomorrow will be a day of sunshine. And, when you are most afraid, when you are deep in doubt, pray for the added strength you need to persevere. When you lose, as sometimes you must, turn not to bitterness. Pray for guidance and hold to your belief. If you do, you will soon discover that God has never forgotten you.

### WHO KNOWS?

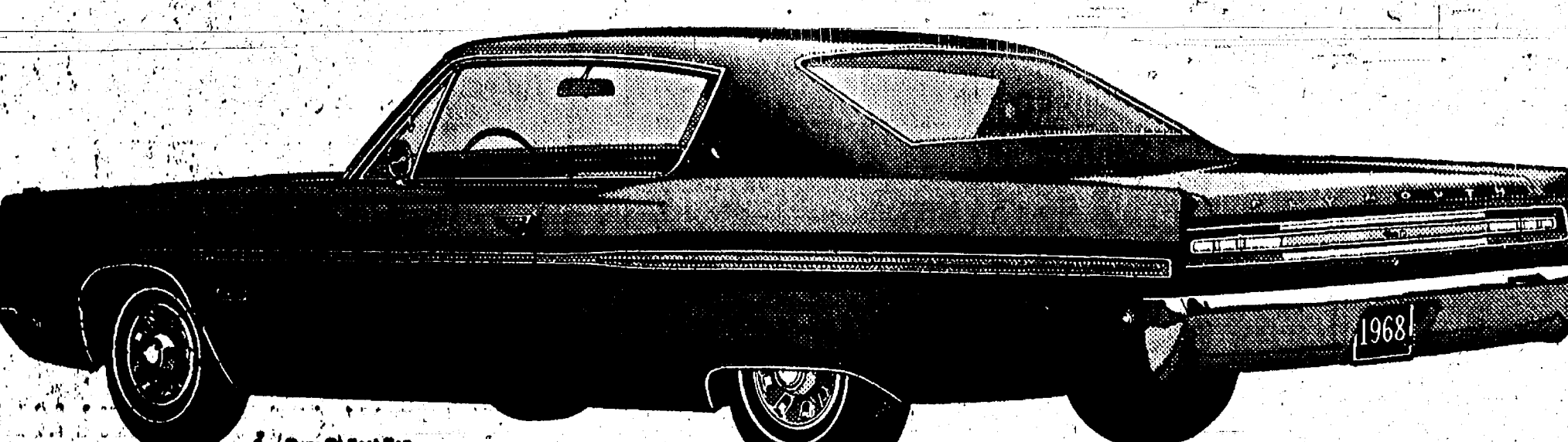
1. For what is Clara Barton best known?
  2. What great conqueror and emperor made his infant son "King of Rome"?
  3. Where do you find the statement, "Love suffereth long and is kind"?
  4. What is the "Holy Grail"?
  5. What is another word for the Ten Commandments?
  6. The anniversary of the death of what great American occurs on April 12?
  7. When did Harry S. Truman take office as President of the United States?
  8. Where did the name "kindergarten" originate?
  9. Who said, "A loving heart is the beginning of all knowledge"?
  10. When did the British liner, "Titanic" sink?
- (Answers on page eight)

# Clean up with the Unbeatables

# FINAL CLEARANCE

# '68 PLYMOUTH'S

- Great year-end buys from those unbeatable guys • Furs, Satellites, Barracudas, Valiants
- Beep-Beep a Road Runner! • Everything goes to wind up the best selling year in Plymouth history
- Act now while there's a good model and color selection



**FOR YEAR-END CLEARANCE BARGAINS ON THE SUCCESS CARS OF THE YEAR YOU GOTTA SEE THE UNBEATABLES**

AUTHORIZED DEALERS **CHRYSLER MOTORS CORPORATION**

**G. A. SALES & SERVICE, 1185 Manchester Rd.**

**DISCOVER**

**NEW HEAP BIG OUTDOOR LIVING PACKAGE**  
From the Exchange at AAA

Now broader comprehensive and collision coverage on owned, rented or borrowed motor homes, campers and trailers. If you are a part of the fast-growing vacation vehicle fleet that is exploring the USA, then you should find out more about the ways that the Exchange leads the way in meeting your needs.

DISCOVER how this great new service added to the Exchange's New Fault-Free Collision Protection, famous Fellow Member Collision Protection, Highway Care, coast-to-coast drive-in Claims Service and Money Back on your car insurance gives you the best service and protection available.

CALL TODAY! LEAD THE WAY WITH MICHIGAN'S LARGEST CAR INSURANCE ORGANIZATION

ENTIRE AUTOMOBILE INTER-INSURANCE EXCHANGE AND MOTOR STATE INSURANCE COMPANY







## Co-Op Nursery Still Has Openings In All Sessions

Chelsea Co-Op Nursery announced this week that they have a few openings left in all sessions.

The four-year assist session meets Monday, Wednesday and Friday mornings, the third-year assist session meets Tuesday and Thursday mornings and the non-assist session meets Monday, Wednesday and Friday afternoons.

If you would like your pre-school child to share new experiences with other pre-schoolers under the guidance of a trained teacher, the Chelsea Co-Op Nursery provides this opportunity. Further information may be gained by contacting Mrs. Thomas Donkin at 475-7261 or Mrs. Douglas Stark at 475-5804.

## Cushman Reunion Held at Grass Lake

The Cushman family gathered at the Grass Lake American Legion Hall, Sunday, Aug. 4, for their family reunion. Mr. and Mrs. Wayne Havens hosted.

Attending were Mr. and Mrs. Robert Havens and family, of Goshen, Ind., Mrs. Calvin Waterman and family, of St. Clair Shores, Mr. and Mrs. Gary Cushman and family, of Rochester, N. Y., Mrs. Viola Holderman of Detroit, Mr. and Mrs. Rodney Cushman and family, of Lansing, and Mr. and Mrs. Roy Cushman of Dorrisburg.

Mr. and Mrs. Charles Carty and Warren Cushman of Chelsea were present, along with Mr. and Mrs. Virgil Havens and family, of Selfridge Air Force Base, Mrs. Alice DiLaura of Belleville, Mr. and Mrs. William Havens of Grass Lake and George Cushman and family, of Portland, Ore.

The Cushman from Oregon flew in to the reunion and took all interested family members up for sight-seeing flights.

## Homemaking Hints

When buying major appliances select the model that best meets your needs—free-standing, built-in or portable.

Woven carpet is made on looms which produce the pile and backing in one operation. Standard weaves include Wilton, Axminster and velvet.

Paint brushes last longer if you take care of them. Clean them thoroughly after each painting job. If you soak a brush in a solvent for any length of time, be sure to suspend it by its handle. Let it dry in the same manner, suspended by the handle. You may store brushes by laying them flat or by suspending by the handles—but NEVER stand a paint brush on its bristle tips.

Paint brushes last longer if you take care of them. Clean them thoroughly after each painting job. If you soak a brush in a solvent for any length of time, be sure to suspend it by its handle. Let it dry in the same manner, suspended by the handle. You may store brushes by laying them flat or by suspending by the handles—but NEVER stand a paint brush on its bristle tips.

Mr. Parcell, a 1965 graduate of Saginaw High school, attended Ferris State College and will transfer to Central Michigan University in the fall.

Bridal showers honored the new Mrs. Parcell, one given by the bridegroom's grandmothers, Mrs. Arvilla Parcell and Mrs. Kenneth Ennis, another by the bride's aunts Mrs. Marjorie Frymuth, Mrs. Victor Miller and Mrs. Ruby Hendricks, and a third by friends who work at the Chelsea State Bank.

**GUM TROUBLES**  
Troubled with bleeding gums? Check between-teeth spaces for foreign matter which the toothbrush often can't reach. When such particles accumulate, they irritate and break down gum tissues, making gums more susceptible to bleeding.

## TIPS for your TOP

from **TODDY and FRAN**

Would you believe it's time to think of grooming the gals to go back to school? Yes—and whether they're going to college or kindergarten, they'll go with considerably more confidence if they know they look lovely. There's something great about facing all those new friends—the old ones the teen-agers haven't seen for several months—with a well-styled head of hair! No matter how your particular school girl likes her hair—long or short, straight or curly—she's going to look better if she has professional advice. Why not bring her in to see one of our experts? They'll treat her hair with the care they'd give their own because they take pride in their work.

Meigs Mirror Beauty Salon  
Phone 443-0816  
5585 Jackson Rd., Ann Arbor



Mrs. Kenneth A. Bollinger

## Linda Wahl, Kenneth Bollinger Wed at Zion Lutheran Church

A 6:30 p.m. ceremony at Zion Lutheran church, Rogers Corners, was the setting for the marriage of Linda Louise Wahl and Kenneth A. Bollinger, Aug. 3. The Rev. John R. Morris performed the ceremony at which Donald Bussler of Ann Arbor sang, "O Perfect Love" and "The Wedding Prayer," and Douglas Spike of Williamston played the organ.

Parents of the newlyweds are Mr. and Mrs. Howard E. Wahl of 7900 Clear Lake Rd., Grass Lake, and Mr. and Mrs. Lee A. Bollinger of 2811 Peckins Rd., East Lansing.

For the double-ring ceremony, the bride selected a floor-length gown of silk organza and eyelet embroidery styled with cap sleeves and a straight-line skirt. Roses and eyelet edged the hemline, and ribbon streamers fell from a tiny bow on the bodice. A detachable Watteau train of silk organza and eyelet graced the gown. Her shoulder-length veil of French silk allusion was held by a headpiece of eyelet embroidery, petals and roses. She carried a colonial nosegay of white roses and stephanotis.

Miss Kathleen Sutter of McKinley St., the maid of honor, was attired in a floor-length yellow linen gown with Empire lines. The bodice and cap sleeves were edged with white daisies. She wore a matching butterfly veil and carried a cascading bouquet of white daisies.

Bridesmaids Miss Nancy Schoch of Chesaning and Mrs. William Brewer of Peckins Rd., the bridegroom's sister, were attired in gowns identical to the maid of honor's.

Mrs. Wahl was dressed in a pale blue sheath with lace coat and matching accessories. She wore a corsage of red roses. A corsage of yellow roses completed the bridegroom's mother's outfit of beige sheath, lace coat and matching accessories.

Also attired in yellow linen was the flower girl, Miss Deborah Sue Bollinger, the bridegroom's sister, who carried a basket of white daisies. Kent W. Bollinger assisted his brother as ringbearer. Bill Bailey of Flint served as best man and groomsmen were Ronald Bollinger, the bridegroom's brother, Jason Wahl of Munith and Lester Wahl of Grass Lake, the bride's brothers.

A reception for 250 guests followed at Chelsea "Pineview" Rod and Gun Club. Miss Janet Wolf of Chelsea was the hostess.

Intellectual with the machine who is replacing the many laborers and their hands.

**MUSIC**  
"Young American Musicians" features Andrew Wolf returning for a second program, Wednesday, Aug. 14, at 7 p.m.

The young Philadelphia pianist devotes this television recital to Variations and Fugue on a Theme of Handel, Op. 24, by Brahms.

## Guenther Photo Being Exhibited At National Show

A photograph by local professional photographer Ralph Guenther, 115 Park St., has been selected for display at the 77th annual exhibition of professional photography, the world's largest and most comprehensive print show.

Sponsored by the Professional Photographers of America, Inc. (PPA), the exhibition opened Aug. 4 at the Conrad Hilton Hotel, Chicago, Ill. It is being held in conjunction with the 77th International Exposition of Professional Photography.

More than 4,000 prints were judged by professional photographers from across the nation. Guenther's photo is titled, simply, "The Bride." Only 900 prints were accepted for the five-day display.

PPA is the oldest and largest association of professional photographers in the world with national headquarters in Des Plaines, Ill. PPA also establishes standards of professional performance for its more than 12,000 members.

**FLOWER STATE**  
More species of flowering plants are found in California than any other state. Of some 30,000 different plants in the United States, a sixth grow in California.

## Ann Hepburn, David Purcell Wed Sunday at Methodist Church

Ann Hepburn, the daughter of Mr. and Mrs. Dean Hepburn of W. Middle St., and David Jay Purcell, son of Mr. and Mrs. David Purcell of Saginaw, were married at the First Methodist church Aug. 4.

Rev. Robert Worgess performed the 2 p.m. nuptials, and Barbara Kemmer sang "The Prayer" and "The Wedding Song."

The bride wore a white Otto dress with a detachable length Watteau train. A crown of organza loops and a crown of organza loops were also worn. The gown was designed with a detachable length Watteau train. A crown of organza loops and a crown of organza loops were also worn.

The bride wore a royal-blue dress trimmed in white and white accessories for the couple's wedding trip to Bermuda. She also wore a corsage of white roses taken from her bouquet.

After the week-long trip, the couple will be at home at 805 1/2 S. Tanager, Mt. Pleasant.

The former Miss Hepburn graduated in 1965 from Chelsea High school and attended Ferris State College. She is now working at the Mt. Pleasant Exchange Savings Bank.

Mr. Parcell, a 1965 graduate of Saginaw High school, attended Ferris State College and will transfer to Central Michigan University in the fall.

Bridal showers honored the new Mrs. Parcell, one given by the bridegroom's grandmothers, Mrs. Arvilla Parcell and Mrs. Kenneth Ennis, another by the bride's aunts Mrs. Marjorie Frymuth, Mrs. Victor Miller and Mrs. Ruby Hendricks, and a third by friends who work at the Chelsea State Bank.

Miss Carol Hepburn of W. Middle St., the bride's sister, was a bridesmaid. She wore a white gown with a detachable length Watteau train. A crown of organza loops and a crown of organza loops were also worn.

The bridegroom's sister, Mrs. Arvilla Parcell, was a bridesmaid. She wore a white gown with a detachable length Watteau train. A crown of organza loops and a crown of organza loops were also worn.

Miss Hepburn was her sister's bridesmaid. She wore a white gown with a detachable length Watteau train. A crown of organza loops and a crown of organza loops were also worn.

The bridegroom's sister, Mrs. Arvilla Parcell, was a bridesmaid. She wore a white gown with a detachable length Watteau train. A crown of organza loops and a crown of organza loops were also worn.

Miss Hepburn was her sister's bridesmaid. She wore a white gown with a detachable length Watteau train. A crown of organza loops and a crown of organza loops were also worn.

The bridegroom's sister, Mrs. Arvilla Parcell, was a bridesmaid. She wore a white gown with a detachable length Watteau train. A crown of organza loops and a crown of organza loops were also worn.

Miss Hepburn was her sister's bridesmaid. She wore a white gown with a detachable length Watteau train. A crown of organza loops and a crown of organza loops were also worn.

The bridegroom's sister, Mrs. Arvilla Parcell, was a bridesmaid. She wore a white gown with a detachable length Watteau train. A crown of organza loops and a crown of organza loops were also worn.

Miss Hepburn was her sister's bridesmaid. She wore a white gown with a detachable length Watteau train. A crown of organza loops and a crown of organza loops were also worn.

The bridegroom's sister, Mrs. Arvilla Parcell, was a bridesmaid. She wore a white gown with a detachable length Watteau train. A crown of organza loops and a crown of organza loops were also worn.

Miss Hepburn was her sister's bridesmaid. She wore a white gown with a detachable length Watteau train. A crown of organza loops and a crown of organza loops were also worn.

The bridegroom's sister, Mrs. Arvilla Parcell, was a bridesmaid. She wore a white gown with a detachable length Watteau train. A crown of organza loops and a crown of organza loops were also worn.

**Don't take chances!**

**Have your RUGS and FURNITURE CLEANED by the "flower-fresh" Absorption Process**

Everything cleaned by **Duraclean** right in your home!

- NO messy soaking
- NO harsh scrubbing
- Furnishings ready for use same day

For FREE quotation call 428-8885 after 3:30 p.m.

**DURACLEAN BY WURSTER**  
310 S. Macomb  
Manchester

## INTRODUCING



Richard (Dick) Harvey

As a Metropolitan representative, will be glad to provide information about your security program, your Social Security benefits, Accident and Health insurance, or retirement income. Just call or phone:

**RICHARD HARVEY**  
Taylor Street, Chelsea, Mich.  
Phone 479-4901

**Metropolitan Life Insurance Company**  
NEW YORK, N. Y.

## august furniture sale

August is here again and time for our annual floor sample sale. We have a wonderful selection. Everything from breakfronts to tabletop accessories and styles from the starkest modern to romantic Mediterranean. You'll find savings from 10% to 50% on floor samples and may even special order, if you don't find what you want on the floor, at a 10% savings. If you come early in August, you'll find the most complete selection. Our sale runs from August 1 to the 24th.

**Merkel**  
FURNITURE and CARPET

Main Store in Chelsea • Telephone 475-5521 • Open Mon. and Fri. nights 'til 9:00  
Professional Interior Design Consulting





**GOLDEN WEDDING ANNIVERSARY:** Mr. and Mrs. Oscar Kalmbach will be honored at an open house in celebration of their golden wedding anniversary Sunday, Aug. 11, from 3 to 6 p.m. at their home at 17380 Garvey Rd. Hosting the affair are their daughters and families, Mr. and Mrs. Leon Sanderson of Grass Lake, Mr. and Mrs. James Beal of Saline and Mr. and Mrs. James Gaunt of Chelsea. The Kalmbachs have lived at the Garvey Rd address since their marriage Aug. 10, 1913. They are members of the Salem Grove United Methodist church, the Chelsea Community Farm Bureau and the North Sylvan-Cavanaugh Lake Grange. In addition, Mrs. Kalmbach is a member of the Sylvan Community Club and the WSCS and choir of the Salem Grove church.

### Leo Merkels' Daughter Climbs Bamboo Ladder to Success

What started as a business endeavor out of "desperation" has ended up as a multi-million dollar business for Mrs. Audrey Savikas, the daughter of Mr. and Mrs. Leo Merkel of 135 E. Middle St.

Mrs. Savikas has said that Bantam Products, Inc., a Florida business that designs and manufactures rattan furniture, lamps and accessories, began because there was little else to do in Florida in 1948.

The business started as a manufacturer of wall accessories and lamps out of bamboo, an abundant commodity in Florida. Mrs. Savikas, president of the company, started by making several bamboo pieces for her home. Since then the company has expanded to rattan furniture made for every room in the house.

Bantam buys the rattan from the Philippines and must enter into a contract for the shipments a year in advance. Heavy rains and natural catastrophes often stall shipments for months before they can reach Florida.

### MID-STATE FINANCE CORP.

**\$25 to \$1,000  
For Any  
Worthwhile Purpose**

See or Call  
**FRANK HILL**  
at 475-8631

111 PARK STREET  
CHELSEA, MICH.



**COVERS MORE! LOOKS BETTER!  
LASTS LONGER!**

That's right! Quality Dutch Boy House Paint actually saves you money. It covers more surface area because it has superior hiding power. It looks better, too! Its tough, brilliant finish wears slowly and evenly. Resists cracking and peeling. Keeps costly maintenance way down. So get the most for your money! Get quality! Get Dutch Boy House Paint!

Depend on "Dutch Boy"  
more years to the gallon



**MERKEL BROS.**

### Track Meet Saturday Ends Rec. Program

Chelsea youngsters ran in the final recreation track meet of the summer Aug. 3.

Highlighting the last meet were John Daniels who swept five firsts out of eight events in the 7- and 8-year-old group, Kurt Kargel who won three in the 9- and 10-year-old division, and Randy Musbach and Keith Kargel who took top honors in three events each in the 11- and 12-year-old group.

Following is a line-up of those who placed in the events:

7- and 8-Year-Olds: High jump, John Daniels, Steve Pennington and Ann Schaible; broad jump, John Daniels, Steve Pennington and Jim Leach; 50-yard dash, Jeff Eder, Laura Rademacher and Ann Schaible; 100-yard dash, John Daniels, Jeff Eder and Steve Pennington; 220-yard dash, John Daniels; 440-yard run, Jim Leach; 880-yard run, Steve Pennington; and mile run, John Daniels.

9- and 10-Year-Olds: High jump, Dave Schaible, Matt Heydlauff and Kurt Kargel; broad jump, Kurt Kargel, Matt Heydlauff and Dave Schaible; 50-yard dash, Kurt Kargel, Kent Kargel and Matt Heydlauff; 100-yard dash, Kurt Kargel, Matt Heydlauff and Kent Kargel; 220-yard dash, Kurt Kargel, Kent Kargel and Don Morrison; 440-yard run, Matt Heydlauff, Bill Rademacher and Kent Kargel; 880-yard run, Ricky Davis; mile run, Dave Schaible and Mike Tobin; 11- and 12-Year-Olds: High jump, Keith Kargel, Randy Musbach and Krista Kargel; broad jump, Keith Kargel, Tim Eder and Dave Leach; 50-yard dash, Randy Musbach, Tim Eder and Keith Kargel; 100-yard dash, Randy Musbach, Tim Eder and Keith Kargel; 220-yard dash, Tim Eder, Dave Leach and Dave Proctor; 440-yard run, Keith Kargel and Krista Kargel; 880-yard run, Mark Heydlauff and Dave Leach; mile run, Randy Musbach.

Three events crossed age boundaries and found the team of Keith Kargel, Dave Leach, Krista Kargel and Jeff Eder capturing a first in the 440-yard relay. The team of Kurt Kargel, Mark Heydlauff, Bruce Stephenson and Ricky Davis followed in second place. In third

place were Jody Daniels, Randy Musbach, Brian Stephenson and Jim Leach.

In the 880-yard relay, the team of Keith Kargel, Brian Stephenson, Jody Daniels and Jeff Eder won the laurels, followed in second place by Dave Schaible, Mark Heydlauff, Ricky Davis and Randy Musbach. The team composed of Tim Eder, Matt Heydlauff, Krista Kargel and Steve Pennington found a berth in third place.

Dave Leach captured the number one spot in the 80-yard hurdles, followed by Dave Proctor in second and Don Morrison in third place.

It takes only a small idea to occupy some minds to the exclusion of everything else.

Errors often arise when men try to prove that they have been right.

## CLOTHING SALE

- at -

**Strieter's Men's Wear**

"The Place To Go for Brands You Know"

\*\*\*\*\*

**CAMPAIGN '68**

HISTORY EXCITEMENT  
DRAMA SUSPENSE

See all the action best...ELECT  
**Magnavox**  
**COLOR TV**  
...and you'll be the WINNER!

\*\*\*\*\*



**\$398<sup>50</sup>**

**Big Picture Console at a table model price!** This beautiful Colonial model 6404 will bring you year-after-year of enjoyment at modest cost. The life-like 267 sq. in. screen is more than twice as big as today's average portable and brings you these Magnavox fine features: a Brilliant Color Tube and exclusive Chromatone. Also available in beautiful Contemporary—your choice.



**\$369<sup>50</sup>**

**Compact and Versatile!** Thrill to vivid pictures... from the Brilliant Color 176 sq. in. screen. Enjoy all the lasting reliability and superb performance that only a Magnavox brings you! Exclusive Chromatone plus telescoping dipole antenna. Perfect for tables, on shelves or in bookcases. Optional Cart shown affords wonderful room-to-room mobility. Contemporary model 6250.

**15" COLOR PORTABLE**

...with a bigger picture than most portables today!



**ONLY \$319<sup>90</sup>**

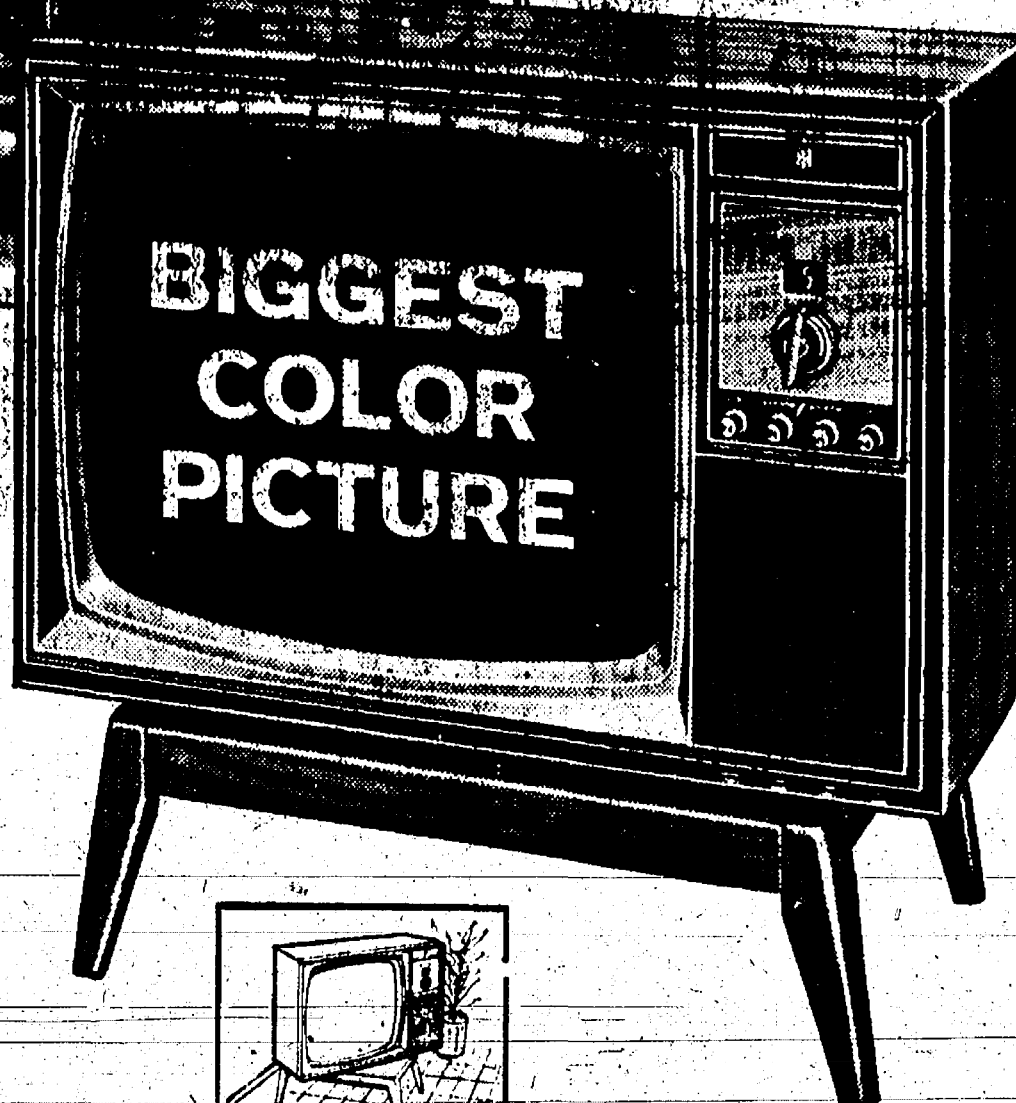
**Big-Set Performance—and reliability!** 117 sq. in. screen is 18 sq. in. BIGGER than most other color portables! And, you can enjoy its Brilliant Color pictures—wherever you go. Telescoping dipole antenna. Model 6000 is the perfect extra set. Move it from room to room on optional mobile cart; also ideal for tables, shelves. ("diagonal measure screen")



**Convenient  
295 sq. in.**

**Swivel  
CONSOLE**

Enjoy it from any angle—always keeps you "front-row-center" wherever you sit in your room. Give your family today's biggest color picture, plus exclusive Magnavox features that will bring them years of viewing enjoyment in vivid, breathtaking color. See this big-value, beautiful Contemporary model 6295 today.



**BIGGEST  
COLOR  
PICTURE**

You'll enjoy  
Campaign '68 and  
the Conventions  
much more  
on today's...

**\$499<sup>50</sup>  
ONLY**

**A magnificent Magnavox is your best buy because**

...you get more features, finer quality, higher reliability and greatest value per dollar! There are no "middleman" costs. Magnavox is sold directly to only a few carefully selected dealers who are dedicated to serving you better! Advanced features give you today's most enjoyable viewing: Brilliant Color—brings truly vivid and natu-

ral pictures. Exclusive Chromatone—adds thrilling depth and dimension unequalled by other makes. Quick-On—lets pictures flash-to-life without annoying "warm-up" delay. Space-age Bonded Circuitry assures you of lasting reliability! Select from over 45 beautiful and authentic fine furniture styles. Remote Control optional on many models.

\*\*\*\*\* SEE and HEAR A MAGNAVOX AT ANY OF THESE FINE STORES \*\*\*\*\*  
Open Friday Until 9 p.m. Close Saturday at 4 p.m.

**FRIGID PRODUCTS**

113 N. Main St., Chelsea

LLOYD R. HEYDLAUFF

Phone OR 9-6511